

TEAC®

SERVICE MANUAL

CTF6800S

68CM CTV

Contents

I.	Servicing Precautions	1
II.	Product Specification	2
III.	Brief Introduction on Chassis.....	4
IV.	IC Pin Description.....	7
V.	Adjusting Description.....	13
VI.	Troubleshooting.....	18
VII.	PCB Layout Diagram.....	25
VIII.	Schematic Circuit Diagram.....	27
IX.	Exploded View.....	28
X.	Spare Parts List.....	29
XI.	Safety & EMC Components.....	44
XII.	Change Record.....	45

Service Manual for M13+TB1240N

PART I. Servicing Precautions

While working, the unit is with ultra high voltage about 25KV inside. So, to avoid the risk of electric shock, be careful to adjust the chassis!

1. Only qualified personnel should perform service procedures.
2. All specification must be met over line voltage ranger of 110V AC to 240V AC 50Hz/60Hz.
3. Do not operate in WET/DAMP conditions.
4. Portions of the power supply board are hot ground. The remaining boards are cold ground.
5. Discharge of CRT anode should be done only to CRT ground strap.
6. When fuse blow, ensure to replace a fuse with the same type and specification.
7. Keep the wires away from the components with high temperature or high voltage.
8. When replacing the resister with high power, keep it over the PCB about 10mm.
9. The CRT anode high voltage has been adjusted and set in the factory. When repairing the chassis, do not make the high voltage exceed 27.5KV (The beam current is 0uA). Generally, the high voltage is set on $25.5KV \pm 1.5KV$ (The beam current is 700uA).
* The values of parameters above are for information only.
10. Before return the fixed unit, do check all the covering of wires to ensure that not fold or not short with any metal components. Check the entire protection units, such as control knobs, rear cabinet & front panel, insulation resister & capacitor, mechanical insulators and so on.
11. There are some mechanical and electrical parts associating with safety (EMC) features (Generally related to high voltage or high temperature or electric shock), these features cannot be found out from the outside. When replace these components, perhaps the voltage and power suit the requirements, but efficient X-ray protection may not be provided. All these components are marked with \triangle in the schematic diagram. When replace these, you'd better look up the components listed in this manual. If the component you replaced not has the same safety (EMC) performance, harmful X-ray may be produced.

PART II. Product Specification

1. Ambient conditions:

- 1.1 Ambient temperatures:
 a. Operating: -10°C ~ +40°C
 b. Storage: -15°C ~ +45°C

- 1.2 Humidity
 a. Operation: < 80%
 b. Storage: < 90%

1.3 Air pressure: 86kpa ~ 106kpa

2. M13 Chassis Specification

2.1 Key Parameters

Decode IC	TB1240N
CPU	M13 TMP87PS38N
Chassis Size	330×330 (mm×mm)

2.2 System

PAL (TV)	Yes
NTSC (TV)	Optional
SECAM (TV)	Optional
AV IN	PAL, NTSC, SECAM (Optional)
Sound System	B/G, D/K, I, M/N
Receiving channels	48.25MHz — 463.25MHz (Hyper band) 471.25MHz — 855.25MHz (UHF)
Scanning lines and frequencies	525/625 lines 15.625kHz/15.75kHz 50/60Hz
Color sub carrier	4.433MHz/3.579MHz

2.3 Picture

Digital Comb Filter	PAL & NTSC
Velocity Modulation	Yes
Black Stretch Circuit	Yes
Picture Effect	Yes
Picture Adjustment	Yes
Intermediate frequencies	38.0MHz or 38.9MHz*

* The IF (picture & sound) may vary with the model of TV sets.

2.4 Sound

NICAM	Multi System
German Stereo	Optional

AV Stereo	Yes
Digital Audio Balance	Optional
Treble and Bass Adjustment	Optional
Balance	Optional
BBE	Optional
ALC (AVL)	Optional
External Super Woof Box	Optional
Sound Effect	Optional
Intermediate frequencies	4.5/5.5/6.0/6.5MHz

2.5 Function

Teletext	4Pages (western character)
Super Receive	Optional
Watch with Time Limitation	Yes
Bookmark	Yes
No-signal Background	Blue Background or Natural Noise Background
Power Voltage display	Optional
Shut Down	Standby/Shut down with relay/Flip Switch
Timer	Turn on/off automatically
Sleep timer	10-20 minutes with 10M.increment

2.6 Other

AV RCA IN	Two Input at Most (front & side)
AV RCA OUT	Yes
S Terminal	Yes
Scart Socket	Single
Tuner	Voltage Synthesizer
Aerial input impedance	75Ω unbalanced din jack ant.input75
Power Voltage	AC 110V~240V 50/60Hz
OSD Language	Chinese & English
Presettable program	100 Programs
Product safety requirement	IEC65
Product EMC/EMI requirement	IEC106

Specification	Scart	RCA
Video input 75 Ω	1Vp-p	1Vp-p
Audio input 10k Ω (R+L)	0.5Vrms	0.5Vrms
Video output 75 Ω	1Vp-p	1Vp-p
Audio output 1k Ω (R+L)	0.5Vrms	0.5Vrms
RGB input 75 Ω	0.7Vp-p	
Audio line output 1k Ω	1Vp-p	

* Design and specifications are subject to change without prior notice for the purpose of performance improvement.

PART III. Brief Introduction on Chassis

The circuit of M13+TB1240 mainly consists of the following parts: tuner, IF channel, video detector, color decoding, luminance & matrix circuit, demodulation & power amplification for sound, sync separation, horizontal & vertical scan, microcontroller, remote control receiver & transmitter, EHT generated circuit, switched-mode regulated power supply, flat square self-convergence color tube. (See Fig.1)

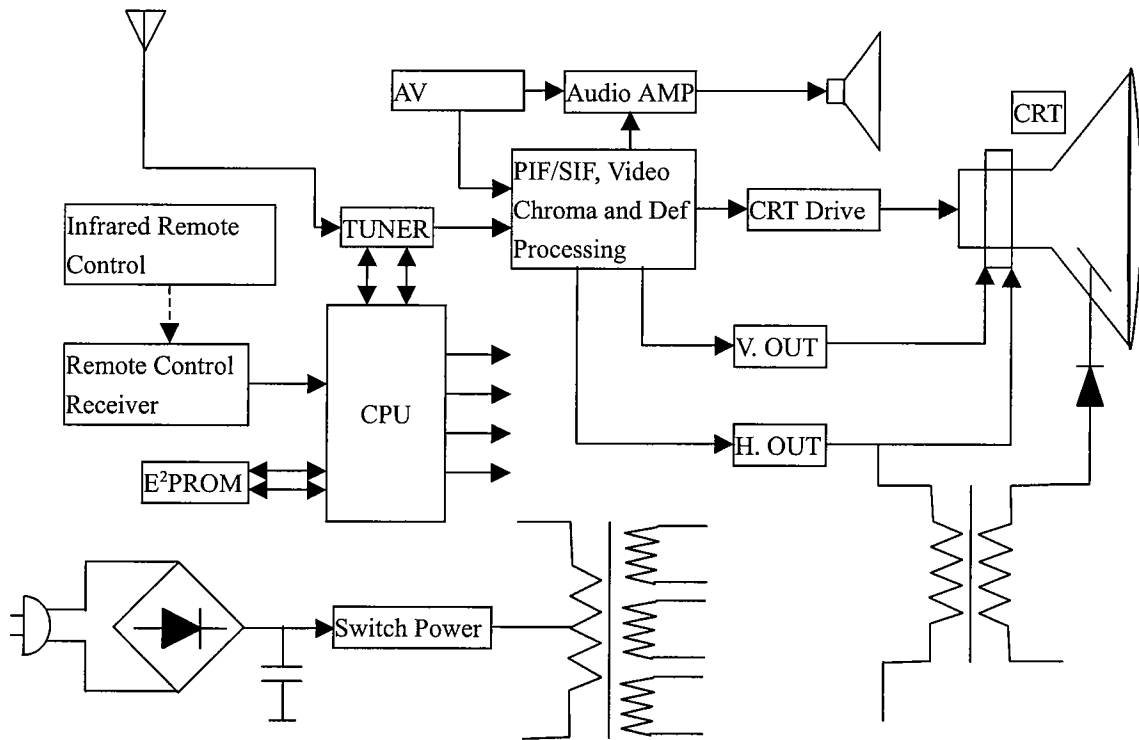


Fig.1 M13+TB1240N

(1) Tuner

The function of the tuner is to select the channel to be received and suppress the interference, to amplify the high frequency signal, to improve the receiving sensitivity and SNR, to generate PIF signal through frequency conversion.

(2) IF Channel

The IF Channel mainly ensures the sensitivity and selectivity of the complete machine. The IF AMP integrated in TB1240N is made up of the third-stage dual-differential amplifier with gain value above 70db, SNR of 55dB and bandwidth of 7MHZ. The video demodulation circuit is made from the built-in PLL Sync Detector. The spectrum of the demodulation carrier is unitary and not affected by the content of the video signal. The tuner features stable receptivity while the signal output from the video detector features high fidelity.

PLL built-in TB1240N generates 38.0MHZ or 38.9MHZ demodulation reference signal for sync detector to demodulate the video signal, which is called 'PLL sync demodulation'.

(3) Chroma Signal Decoding Circuit

Through the external BPF (band-pass filter) to single out the chroma signal and burst signal within the range of $f_{sc}+1.3\text{MHz}$ from among the composite signals output from the video detector. After being amplified by ACC, the chroma signal is fed into the synchronous detector to be demodulated to obtain the color difference signal.

(4) Luminance Channel and Matrix Circuit

The luminance channel of TB1240N has the black stretch circuit to make the 'darkish' ingredient of the picture turn 'atrous', thus improve the contrast and depth perception of the picture. It also has the delayed definition-enhanced circuit to enable the details of the picture more vivid. The luminance signal (Y) is sent into the matrix circuit after being delayed for $0.6\mu\text{s}$ and composes R/G/B signal combined with three color-difference signals (B-Y, R-Y, G-Y).

(5) Sync Separation and Deflection Processing Circuit

TB1240N has the $32f_h$ PLL (f_h = horizontal frequency). In accordance with the frequency and phase information carried by composite sync signal, PLL generates scan clock signal with $32f_h$ and horizontal drive pulse will be obtained through $32f_h$ countdown. Use integrating circuit to extract vertical sync signal from the composite sync pulse to control the counter for vertical countdown. The counter countdown the $32f_h$ clock signal, thus vertical frequency sync pulses under various systems can be obtained.

TB1240N includes the vertical SW former (sawtooth wave former) and can control the gain and linear of SW (sawtooth wave). Therefore, the vertical amplitude control and the linearity correction of the scanning raster can be achieved by setting the data with remote controller via I²C bus input.

(6) Sound Channel

Use external ceramic filter to select the second SIF signal for the sound channel of TB1240N from the signal output from the video detector. Obtain audio signal after limiting amplification and demodulation by frequency detector for SIF signal, and then output the audio signal to IC TDA2616Q to drive the speaker to restore the sound. Built in the TB1240N, both frequency detector and volume-control attenuator are set and adjusted via I²C bus.

(7) Remote Control System

The MCU (TMP87PS38N) of an 8-bit CPU and the software TCL M13 constitute the control core of the remote control system, mainly accomplishing the following functions: decoding remote control commands; auto search memory; displaying characters & patterns; switching the signal source between AV and TV.

Infrared remote control transmitter is composed of the special single chip (TC-9028F) and the keyboard system. The transmitter translates the commands represented by R/C keys into function codes, and separately demodulates the 37.9KHZ carrier and 940nm infrared ray twice to generate remote infrared transmitting signal delivered by infrared LED. The remote control distance isn't less than 8 meters.

With infrared LED the remote control system converse the optical signal into electrical signal, which will be amplified and decoded to restore the codes of the remote control commands for MCU to analyze and execute.

The remote control system has three operating modes: user-controlled mode (U-mode), service mode (S-mode) and factory default mode (D-mode). U-mode includes the following functions: channel search and memory; televue and channel selecting; volume control, brightness adjustment, contrast and color adjustment. S-mode and D-mode are mainly used in production, checking & repairing, including the following functions: horizontal & vertical centering control, vertical amplitude and linearity adjustment; setting the adjusting range for volume, contrast, brightness, tint and color; geometric adjustment and white balance adjustment.

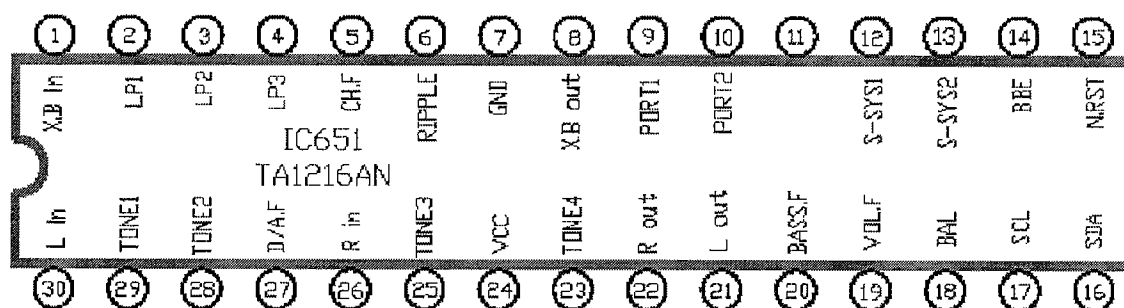
(8) CRT Drive Circuit

Adopting the cascode to amplify voltage and current of R/G/B signal, the CRT drive circuit is able to demodulate the cathode beam current of the CRT. The R/G/B signal input into the cascode circuit is of negative polarity.

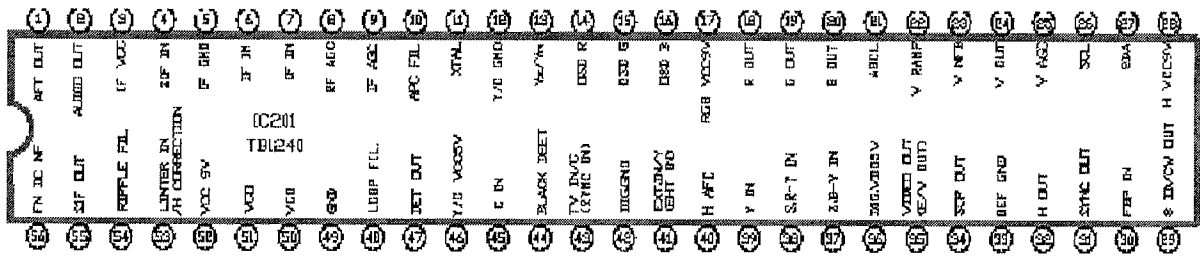
(9) Power Supply Circuit

The circuit supplies various stabilized operating voltages and safeguard protections.

PART IV. IC Pin Description

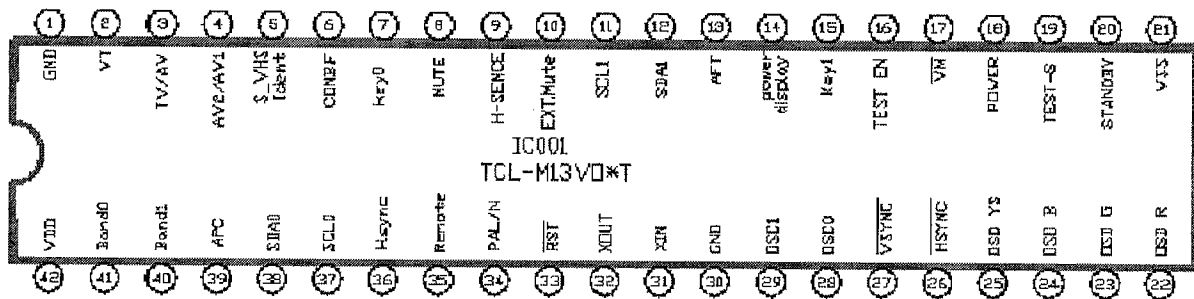


Pin No	Pin Name	Function
1	W-channel input	Audio signal input pin. Inputs woofer signal.
2 3 4	LP1 LP2 LP3	Pins for connecting external capacitors for woof channel signal LPF.
5 19	W-channel filter Volume filter	Pins for connecting capacitors to smooth control current.
6	Ripple filter	Pin for connecting capacitors to reject ripples in supply voltage of 9V.
7	GND	GND pin
8 21 22	W-channel output L-channel output R-channel output	Pins for audio signal output.
9 10	Input ports	Pins for outputting signals to micro-controller by I ² C bus
11	W-channel offset filter	Pins for rejecting offset of woofer channel.
12 13 14	Output ports	Switches controlled by I ² C. Open collector output.
15	Output ports	Switches controlled by I ² C. Ternary output.
16	SDA	I ² C bus SDA pin
17	SCL	I ² C bus SCL pin
18	Balance filter	Pin for connecting capacitor to smooth control current.
20 27	Bass filter Treble filter	Pins for connecting capacitors to smooth control current.
23 28	R-channel LPF L-channel LPF	Pins for connecting external capacitors for bass control LPF for R- and L-channel signal.
25 29	R-channel HPF L-channel HPF	Pins for connecting external capacitors for treble control HPF for R- and L-channel signal.
26 30	R-channel input L-channel input	Audio signal input pins. Input R- and L-channel signals.
24	Vcc	Power pin. Recommended supply voltage is 9V.



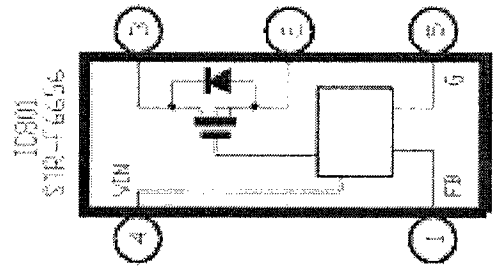
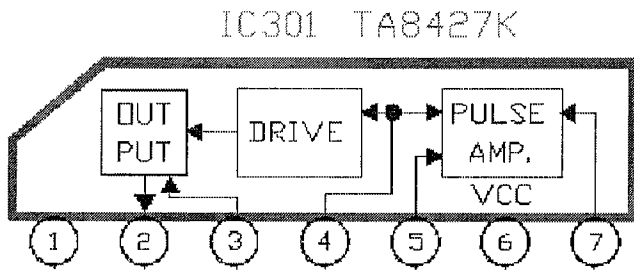
Pin No	Pin Name	Function
1	AFT out	The terminal for AFT output and Self-adj. output.
2	Audio out	The terminal for Audio output
3	IF Vcc (9v)	The terminal for Vcc of PIF circuit
4	SIF in	The terminal for SIF signal input
5	IF GND	The terminal for GND of PIF circuit
6	IF in	The terminal for IF signal input
8	RF AGC	The terminal for RF AGC output (Open corrector Output)
9	IF AGC	The terminal to be connected with an IF AGC filter
10	APC filter	The terminal to be connected with APC filter for chroma demodulation.
11	XTAL	The terminal to be connected with a 4.43MHz X'tal oscillators
12	Y/C GND	The terminal for GND of Y/C circuit
13	Ys/Ym	The terminal for switching of fast Half Tone and Analog RGB Mode.
14	OSD R	The terminal for analog R/G/B signal input
15	OSD G	
16	OSD B	
17	RGB Vcc9V	The terminal for Vcc of RGB circuit (Text circuit).
18	R out	The terminal for analog R/G/B signal output
19	G out	
20	B out	
21	ABCL	The terminal for ABL/ACL control
22	V. Ramp	The terminal to be connected with a capacitor to make V. Ramp signal
23	V. NFB	The terminal for Input of v. sawteeth signal feedback
24	V out	The terminal for vertical drive signal output
25	V AGC	The terminal to be connected with a capacitor for V AGC.
26	SCL	The terminal for input of I ² C bus clock
27	SDA	The terminal for input/output of I ² C bus data
28	H Vcc9V	The terminal for Vcc of deflection circuit
29	S ID/CW out	PAN/NTSC ID output and SECAM ID input. And chroma sub-carrier frequency is switched by bus.
30	FBP in	The terminal for FBP input
31	SYNC out	The terminal for composite sync. Output (Open corrector output)
32	H out	The terminal for out of horizontal drive signal

33	DEF GND	The terminal for GND of deflection circuit
34	SCP out	The terminal for Sand castle pulse (VD+HD+Gp) output
35	EW out	The terminal for E-W out.
36	DIG VDD 5V	The terminal for VDD of digital block.
37	B-Y/S.B-Y in	The terminal for component B-Y/R-Y signal input and SECAM B-Y/R-Y signal input
38	R-Y/S.R-Y in	
39	Y in	The terminal for Y input
40	H.AFC	The terminal to be connected with H.AFC filter
41	EHT in	The terminal for EHT.
42	DIG.GND	The terminal for GND of digital block
43	Sync. in	The terminal for input of the synchronous separation circuit.
44	Black DET	The terminal to be connected with black DET. filter
45	Ext. C in	The terminal for input of chroma signal.
46	Y/C Vcc5V	The terminal for Vcc of Y/C circuit
47	IF DET OUT	The terminal for output of composite video signal and SIF signal detected in IF circuit
48	LOOP FIL.	The terminal to be connected with loop filter for IF PLL
49	GND	The terminal for GND of VCO and SIF circuit
50	VCO	The terminal to be connected with a tank coil for IF VCO
51		
52	Vcc9V	The terminal for Vcc of IF VCO and SIF
53	Limiter in/H.correction	The terminal for SIF signal input and H. curve correction
54	Ripple FIL	The terminal to be connected with a capacitor to stabilize the performance of SIF injection-lock circuit
55	SIF out	The terminal for output of 2'nd SIF signal that is beaten down by the regenerative carrier.
56	FM DC NF	The terminal for FM DC negative feedback and AGC Filter for L-SECAM.



Pin No	Pin Name	Function
--------	----------	----------

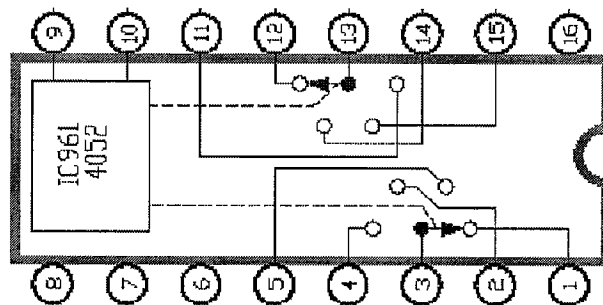
1 21 30	GND Vss GND	The terminal for Ground
2	VT	The terminal for VT output
3	TV/AV	The terminal for TV and AV switch
4	AV2/AV1	The terminal for AV1 and AV2 switch
5	S-video	S-video signal ident
6	Comb.F	The terminal to be connected with a comb. filter
7 15	Key0 Key1	Local key input detection 0/1
8	Mute	The terminal for mute
9	H-Sence	The terminal for high sensitive receiving.
10	Ext-mute	Extern mute
11	SCL1	I ² C bus clock output 1
12	SDA1	I ² C bus data output 1
13	AFT	AFT input
14	Power display	The terminal for supply voltage detection
16	Test-en	Enable the test signal
17	VM	Victory Modulation
18	Power	The terminal for AC power off
19	Test-S	The terminal for adjustment
20	Standby	The terminal for standby.
22 23 24	OSD R OSD G OSD B	OSD R/G/B signal output
25	OSD YS	OSD Y signal output
26 27	HD VD	OSD HD/VD signal input
28 29	OSC1 OSC2	The terminal to be connected with OSD oscillator
31 32	X IN X OUT	The terminal to be connected with a 8MHz oscillator.
33	RST	The terminal for reset signal input.
34	PAL/N	The terminal for PAL and NTSC switch
35	Remote	The terminal for signal input from remote control
36	H.SYNC	The terminal for horizontal sync signal input
37	SCL0	I ² C bus clock output 0
38	SDA0	I ² C bus data output 0
39	APC	N/A
40 41	Band1 Band0	The terminal for band 1/0 output
42	VDD	The terminal to be connected with 5V power supply.

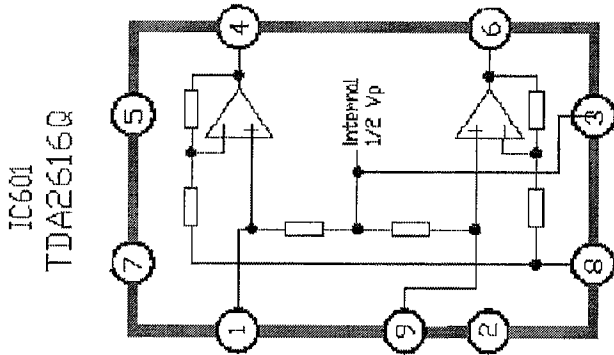


Pin No	Function
1	Ground
2	Vertical output
3	Pump-up power supply
4	Input
5	Phase compensation
6	Power supply
7	Pump-up output

Pin No	Function
1	Input of overcurrent detection signal and constant voltage control signal
2	MOSFET source
3	MOSFET drain
4	Input of power supply for control circuit
5	Ground

Pin No	Function	Pin No	Function
1	0Y input	9	Control terminal
2	2Y input	10	Control terminal
3	Y common output	11	3X input
4	3Y input	12	0X input
5	1Y input	13	X common output
6	Inhibit terminal	14	1X input
7	Negative supply	15	2X input
8	Ground	16	Power supply





Pin No	Pin Name	Function Function
1	-INV1	Non-inverting input 1
2	Mute	Mute input
3	1/2Vp /GND	1/2 supply voltage or ground
4	Out 1	Output 1
5	-Vp	Supply voltage (negative)
6	Out 2	Output 2
7	+Vp	Supply voltage
8	INV 1,2	Inverting voltage (positive)
9	-INV 2	Non-inverting input 2

PART V. Adjusting Description

The TB1240+TCLM13 is designed as the I2C bus controller for the 25" (or above) TV set. We use the Toshiba TB1240N single chip as the color signal decoder and we also have developed the M13 control software for Toshiba CPU. Please take notice that programming the M13 software into the Toshiba TMP87PS38N chip by OTP method when trial-produce and using the mask chips after trial-produce. As the I2C bus is used in this chassis, we can adjust the chassis easily by the remote handset and some items can be adjusted by special apparatus automatically. The TB1240N has some differences from the TB1231 that the pincushion correction, horizontal amplitude and IF VCO can be adjusted by remote handset or be adjusted automatically. Of course, the screen voltage and the focus voltage must be adjusted by hand as before.

To deal with the problems happened during the production, please read this manual carefully and master the character.

There are two adjustment modes: user-mode and D-mode. The former is for home customers, the latter is for advanced adjustment only in manufactory while production and reparation. When in user-mode, the adjustment can be done by the remote handset or the front control panel, but when in D-mode, the adjustment must be done by the remote handset.

Press the **VOL** key on the front control panel until the volume is set to 0, at the same time (don't release the volume key), press the **DISPLAY** button on the remote handset for 3 times quickly, the character **D** will display on the right up screen to indicate that the D-mode is enabled. Now the shortcut buttons on the factory remote handset can be used. **Remark:** the user remote handset can be used also, but it is mainly for reparation. Press **STANDBY** button to exit the D-mode, but keep the system values in menu 7 as presetting. If values changed, they will be memorized. During the production, please set the **BIT-0** in **MODE2** to **1**; so that the D-mode can be enabled by the **D-mode** button on the remote handset directly. Remember: set the **BIT-0** in **MODE2** to 0 and shut down before packing to exit the D-mode forever.

Press the **BUS OFF** button on the factory remote handset to halt the communication between CPU and I2C bus, then, the white balance and the geometry auto-adjustment can be done.

Adjusting method:

No	Item	Adjusting component & Item	Recommend Value	Signal and other conditions	Method
1	Screen voltage	Screen VR knob on the FBT		(Set the R/G/B CUT to 80)	Press the mute button on the R/C to stop the vertical scan. The screen will display a horizontal line. Adjusting the screen VR knob until the line just visible.
2	Focus voltage	Focus VR on the FBT		Crosshatch signal. Input from AV or TV	Adjusting the focus VR knob until the horizontal and vertical lines are the

3	VCO IF	“VCO” button		The difference of VCO should not be great	Press the “ALT” button on the R/C and wait for about 5s. The “VCO ALIGN OK” will display on the screen to indicate the success, otherwise the “VCO FAILURE” will display to indicate the failure. Adjust the VCO coil and try again.
4	KEY 2 (PAL)	VPOS50 (V.Position) HIGH50 (V.Height) VLIN50 (V.Linearity) VSC50 (V.S-Correction) OSD50 (OSD Position)	03 20 03 05 20	Crosshatch signal Any input PAL	Adjust the values with R/C till the size of grids in the center and the edge is the same, the vertical center is right, and the vertical position of PAL OSD is right. Default is the recommended value.
5	KEY 3 (NTSC)	VPOS60 (V.Position) HIGH60 (V.Height) VLIN60 (V.Linearity) VSC60 (V.S-Correction) OSD60 (OSD Position)	00 06 01 07 89	Crosshatch signal Any input NTSC	Adjust the values with R/C till the size of grids in the center and the edge is the same, the vertical center is right, and the vertical position of NTSC OSD is right. Default is the recommended value.
6	KEY 4 (PAL)	HPOS50 (H.Position) HSIZE50 (H.Amplitude) PARA50 (Pincushion alignment) TRAP50 (trapeze) CORN50 (Corner correction) VEHT50 (V.amp EHT) HEHT50 (H.amp EHT)	0D 1C 15 12 0F 07 01	Checker signal Input: any PAL	Adjust the values with R/C till the vertical lines in the center and the edge are really vertical, the horizontal center and amplitude are right. VEHT and HEHT are used for stabilizing the horizontal and vertical amplitude while bright/dark changing. Adjust the two items till the change of amplitude of black/white grids is the minimum. Having adjusted VEHT and HEHT, fine adjustment should be done to the horizontal and vertical amplitude.

7	KEY 5 (NTSC)	HPOS60 (H.Position)	04	Checker signal Input : any NTSC	Adjust the values with R/C till the vertical lines in the center and the edge are really vertical, the horizontal center and amplitude are right. VEHT and HEHT are used for stabilizing the horizontal and vertical amplitude while bright/dark changing. Adjust the two items till the change of amplitude of black/white grids is the minimum. Having adjusted VEHT and HEHT, fine adjustment should be done to the horizontal and vertical amplitude.
		HSIZE60 (H.Amplitude)	01		
		PARA60 (Pincushion alignment)	02		
		TRAP60 (Trapeze)	00		
		CORN60 (Corner correction)	0F		
		VEHT60 (V.amp EHT)	07		
		HEHT60 (H.amp EHT)	01		
		8	KEY 0 OSD ADJ (OSD adjust)		
TXCX (Max OSD Contrast)	30				
RGCN (MIN OSD Contrast)	20				
TNTX	28				
TNTN	28				
TREC	32				
9	KEY 8 (Status adjustment)	SCNT	0F	Crosshatch signal	Adjust the items to the recommend value by the remote handset.
		CNTX	3F		
		CNTN	00		
		BRTX	30		
		BRTN	10		
		COLX	35		
		COLN	00		
10	KEY 9 (Status adjustment)	CNTC	25	Grey Scale + Color Bar	Adjust the items to the recommend value by the remote handset except BRTC. BRTC adjustment: Set the screen in standard status, change the BRTC value, and make the second staircase just visible.
		BRTC	3A		
		COLC	50		
		TNTC	35		
		COLP	00		
		COLS	54		
		BRTS	00		

11	KEY -/-- (sharpness adjustment)	SHPTV3	22	Crosshatch signal	Adjust the items to the recommend value by the remote handset.
		SHPAV3	22		
		SHPTV4	16		
		SHPAV4	16		
		SHPX	12		
		SHPN	3F		
12	KEY 6 (Status adjustment)	RFAGC	25	TV Input Grey Scale + Color Bar 60dB	Refer to the recommended value for HAFC setting; For the PIFAFT value is set by the AFT button on the factory remote handset, don't change it as one's like. Adjust RFAGC till the noise dots are critical. When the SECAM system is available, adjust S-B-Y and S-R-Y to make the chroma of color bar best.
		PIFAFT	50		
		HAFC	00		
		S-B-Y	08		
	Adjustment of sound curve	VOLO5 (The loudness when volume is set to 5)	0E	Sine Signal 1KHz AV Input	① Set the volume to 80. Input 0.5Vrms signal. Measure the level of speaker with db meter and oscilloscope. Record the level Vm (dB). ② Set the volume to 5. Adjust the VOLO5 to make the speaker level 58dB lower than Vm. Set the volume to 25. Adjust the VOLO25 to make the speaker level 30dB lower than Vm.
			(TDA2616Q)		
		VOLO25 (The loudness when volume is set to 25)	25		
		(TDA2616Q)			

13	KEY 1 (White Balance)	R CUT (Red cutoff)	80	Grey Scale Signal PAL	<p>If we use the white balance meter, the RCUT, GCUT and BCUT are for black balance; the GDRV and BDRV are for white balance.</p> <p>If no white balance meter, do it as follows:</p> <p>① Decrease the G CUT value</p> <p>② Adjust the B CUT value</p> <p>③ Press the V button on the R/C to pause the vertical scan</p> <p>④ Observe the color of horizontal line</p> <p>⑤ Continue the vertical scan</p> <p>⑥ Repeat the step2-5 until the horizontal line is violet</p> <p>⑦ Adjust the G CUT value</p> <p>⑧ Repeat ③、④、⑤、⑦ until the horizontal line is white</p> <p>⑨ Observe the brighter bar. Adjust G DRV and B DRV till the bright white bar is pure white.</p> <p>Remark: Repeat pressing the PROG button and the item will alternate recurrently.</p>
		G CUT (Green cutoff)	80		
		B CUT (Blue cutoff)	80		
		G DRV (Green drive)	40		
		B DRV (Blue drive)	40		

Remark: A: The items which can be adjusted automatically by apparatus in line don't need adjusting by hand anymore.

B: There are difference between PAL geometry (OSD) adjustment and NTSC geometry (OSD) adjustment. So do the PAL adjustment, then the NTSC.

C: When "D-MODE" is enabled, press the "AV/TV" button on the R/C, the chassis will provide a group of build-in signal (PAL & NTSC) for reparation.

System setting:

	Item	Adjusting Item	2916MT		
1	KEY 7	VCDM0	28		
		VCDM1	00		
		VCDM2	30		
		MODE0	34		
		MODE1	E5		
		MODE2	26		
		OPTION	30		

Remark: E²PROM has been adjusted and set in the factory. If there's no necessary, don't change and initialize the data as one likes.

PART VI. Troubleshooting

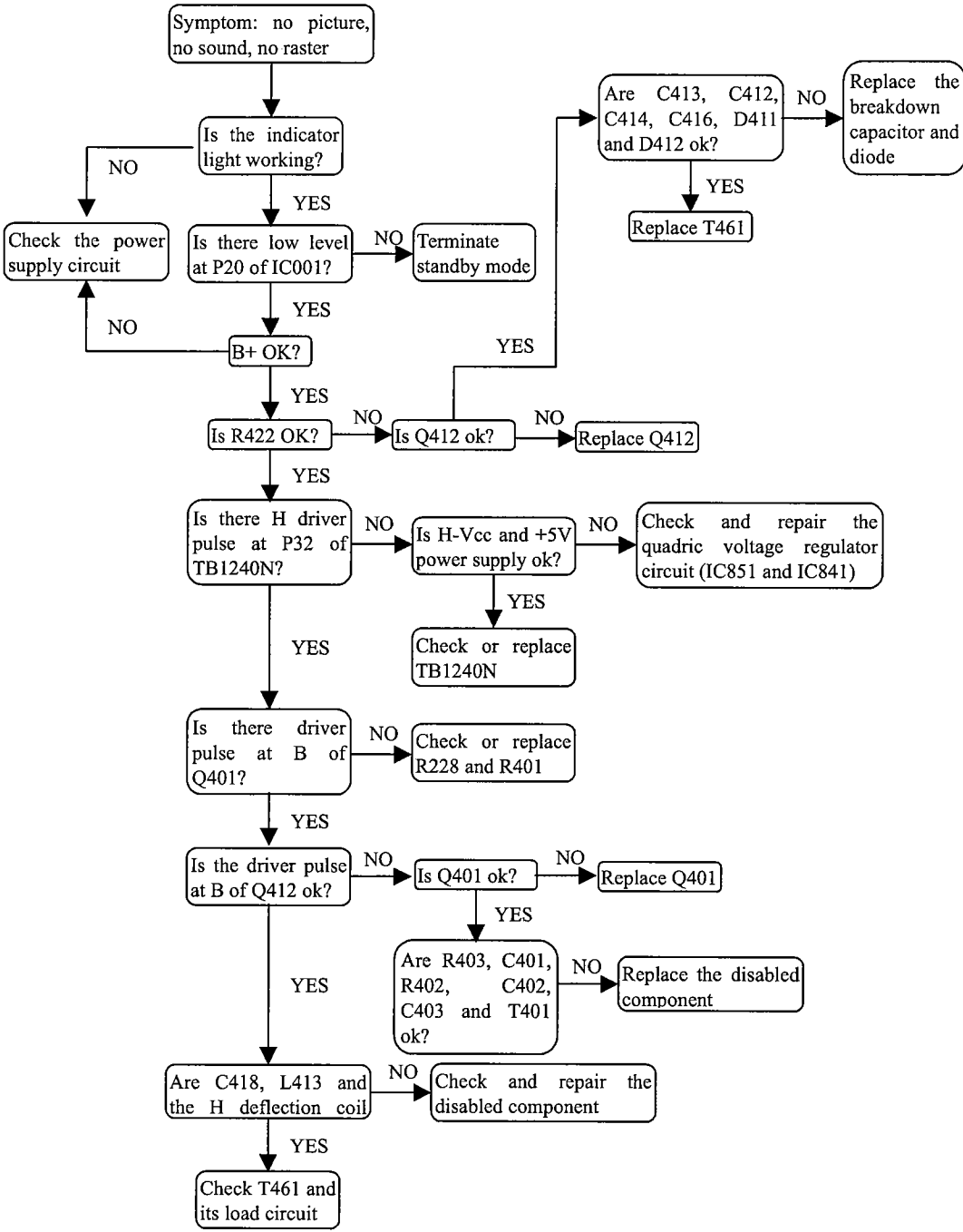


Fig.1 No picture, no sound, no raster

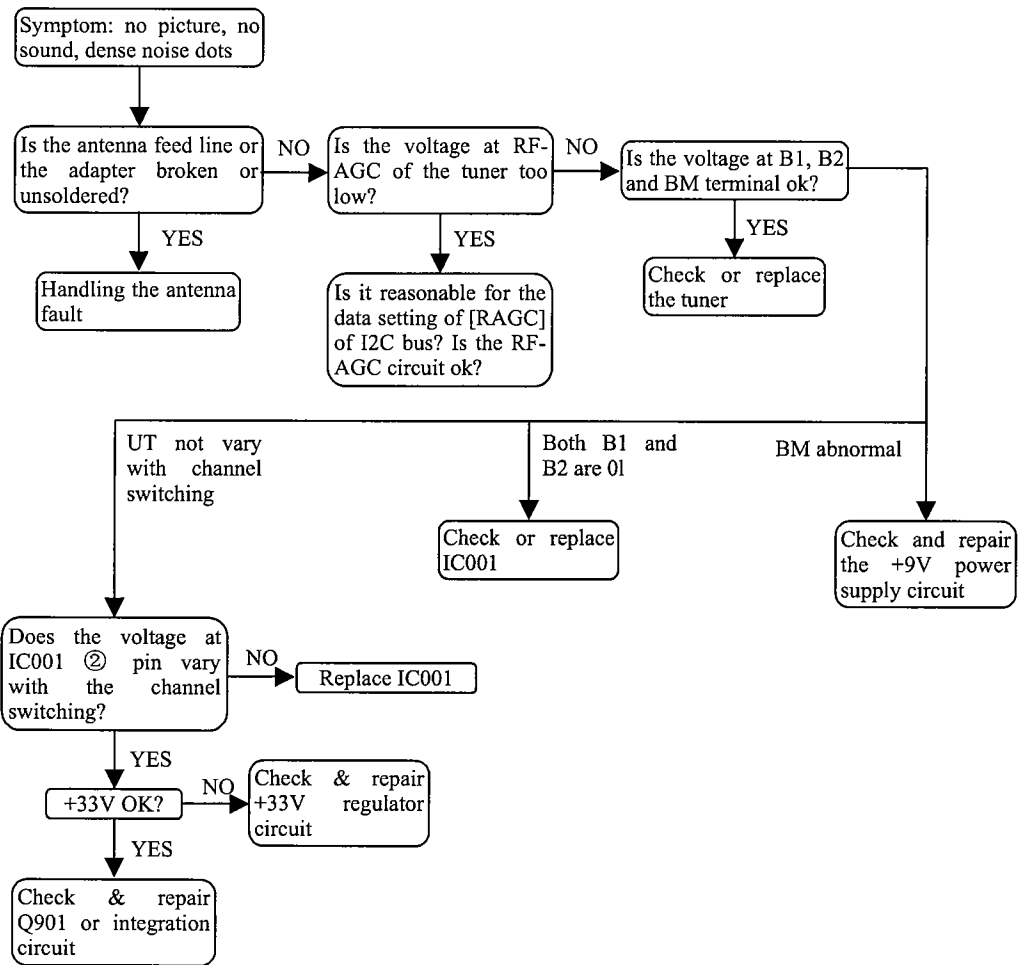


Fig.2 No picture, no sound, dense noise dots

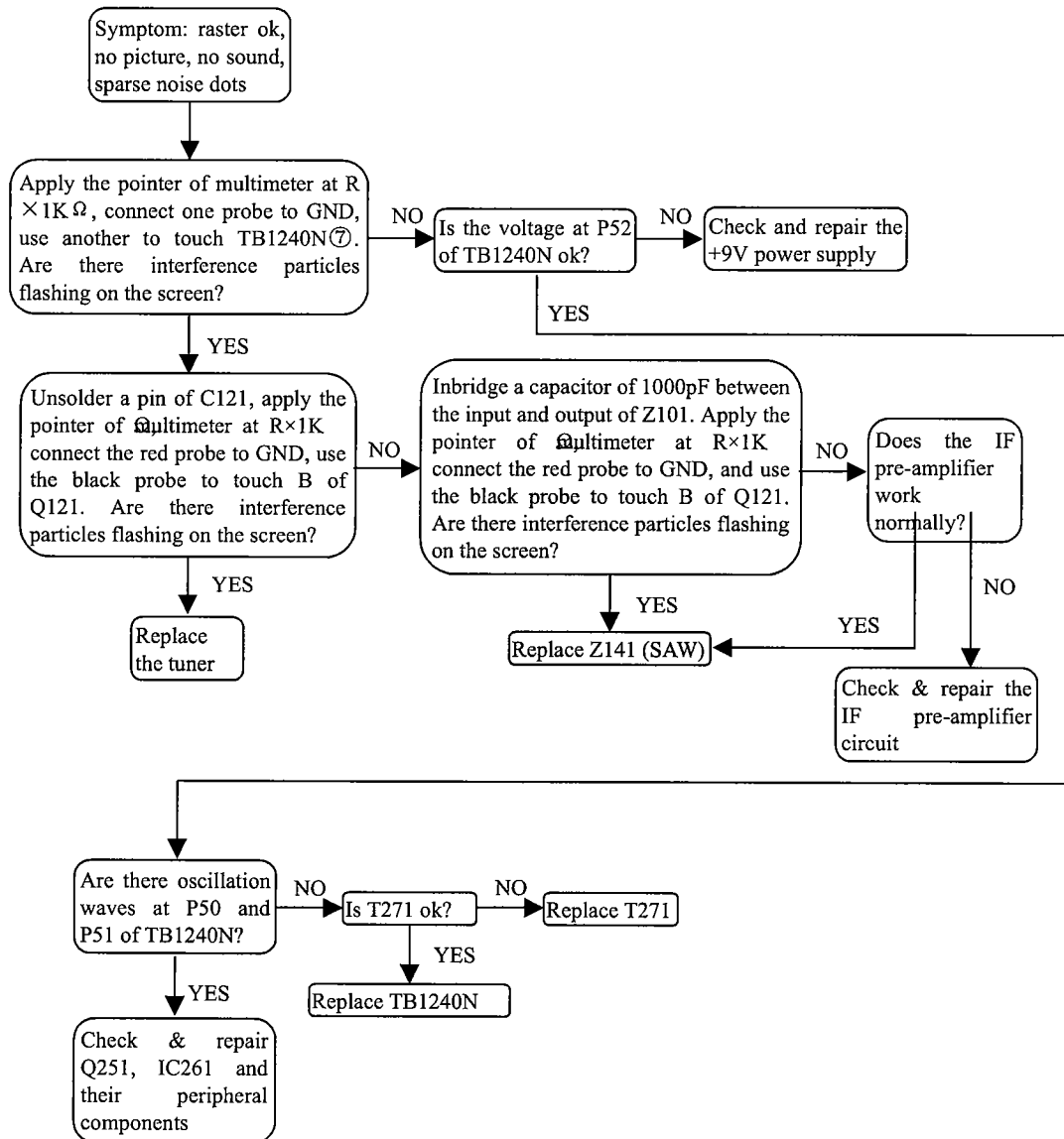


Fig.3 Raster ok, no picture, no sound, sparse noise dots

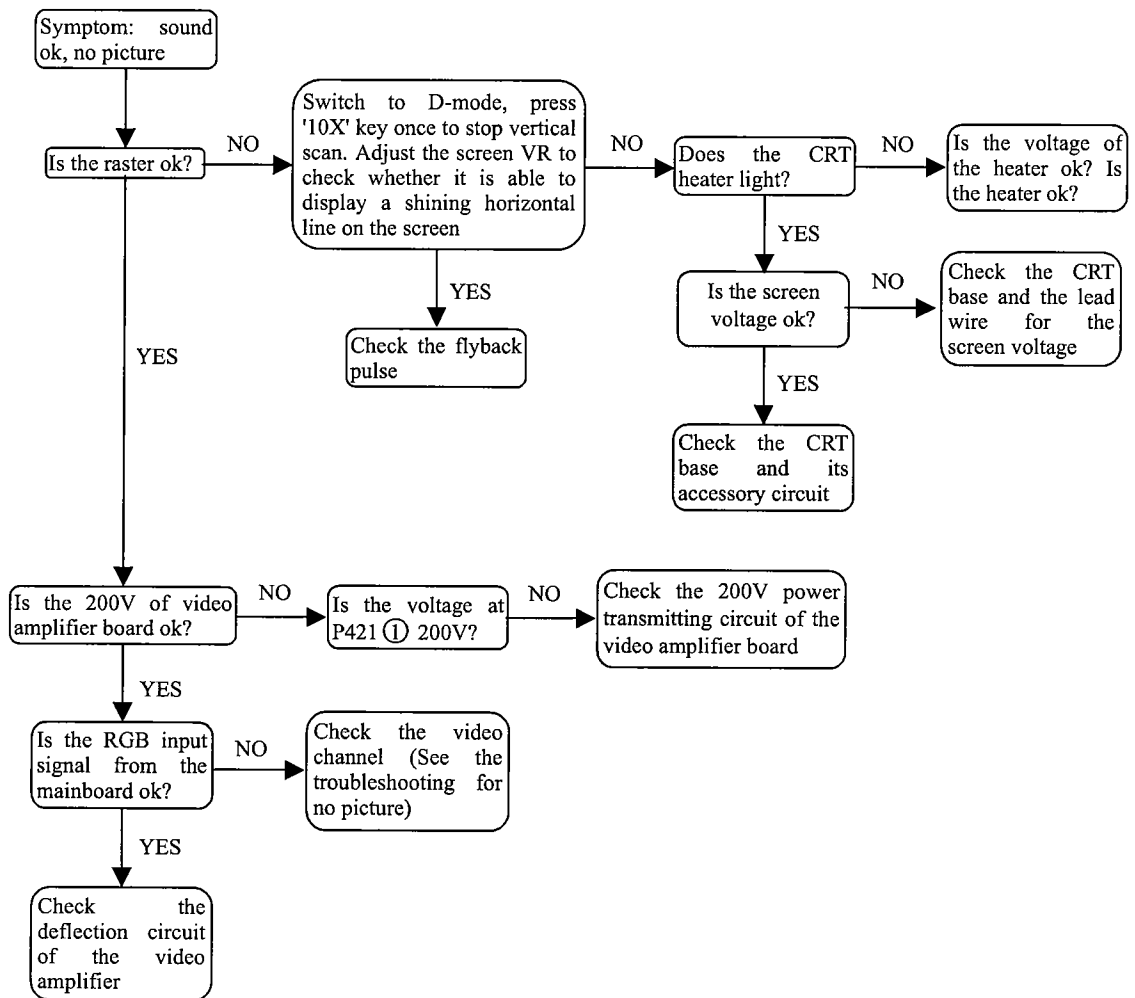


Fig.4 Sound ok, no picture

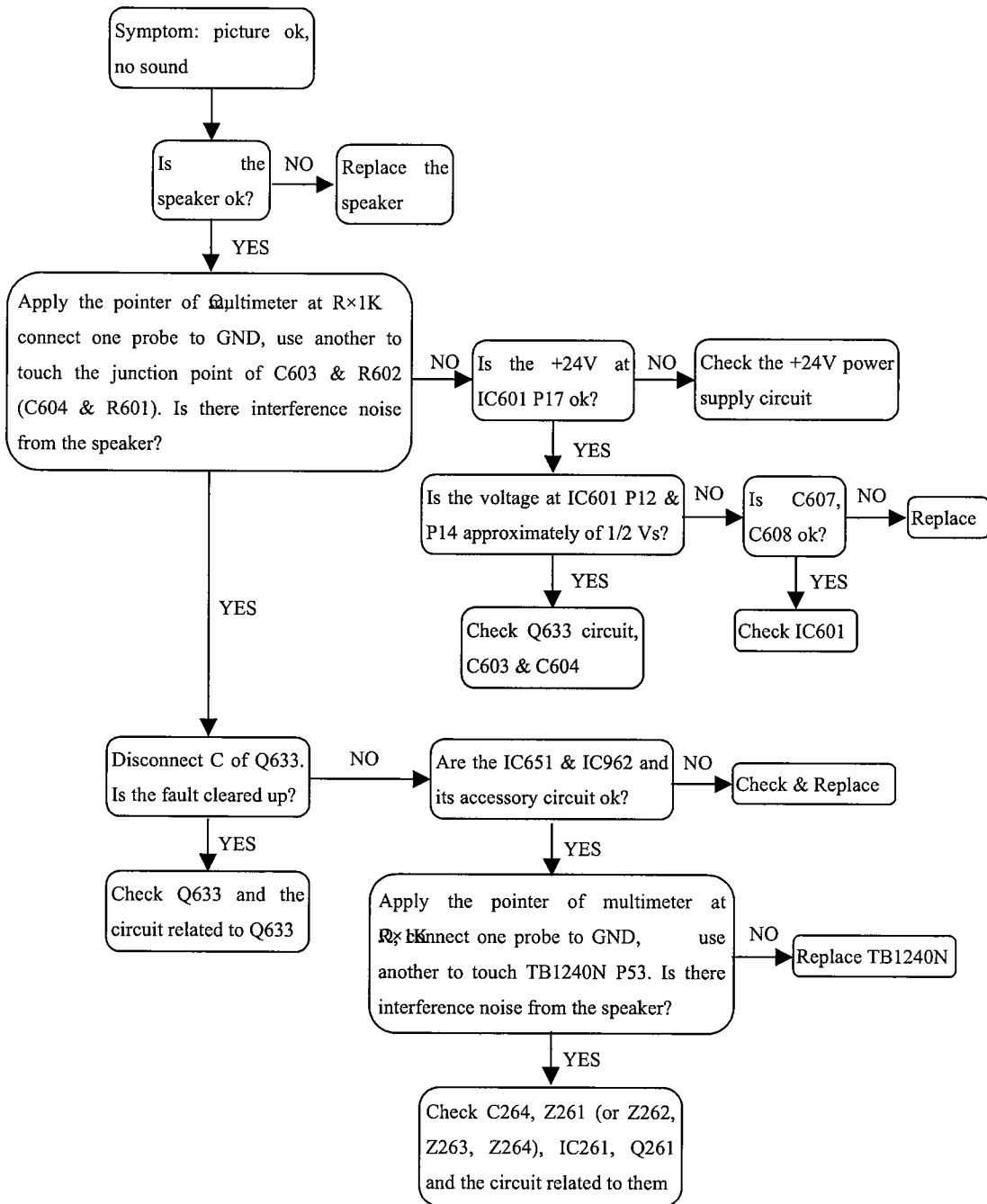


Fig.5 Picture ok, no sound

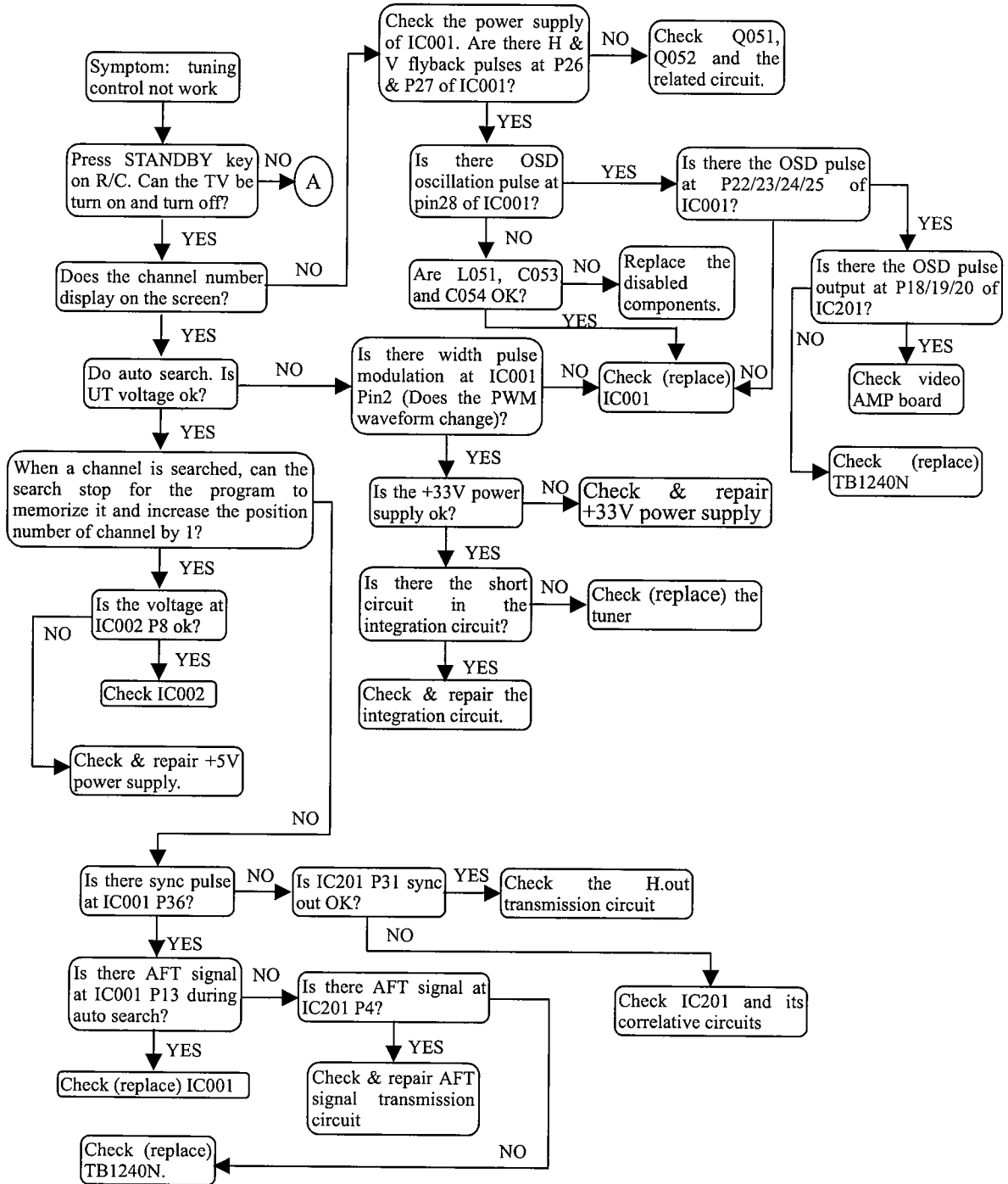


Fig.6 Tuning control not working (1)

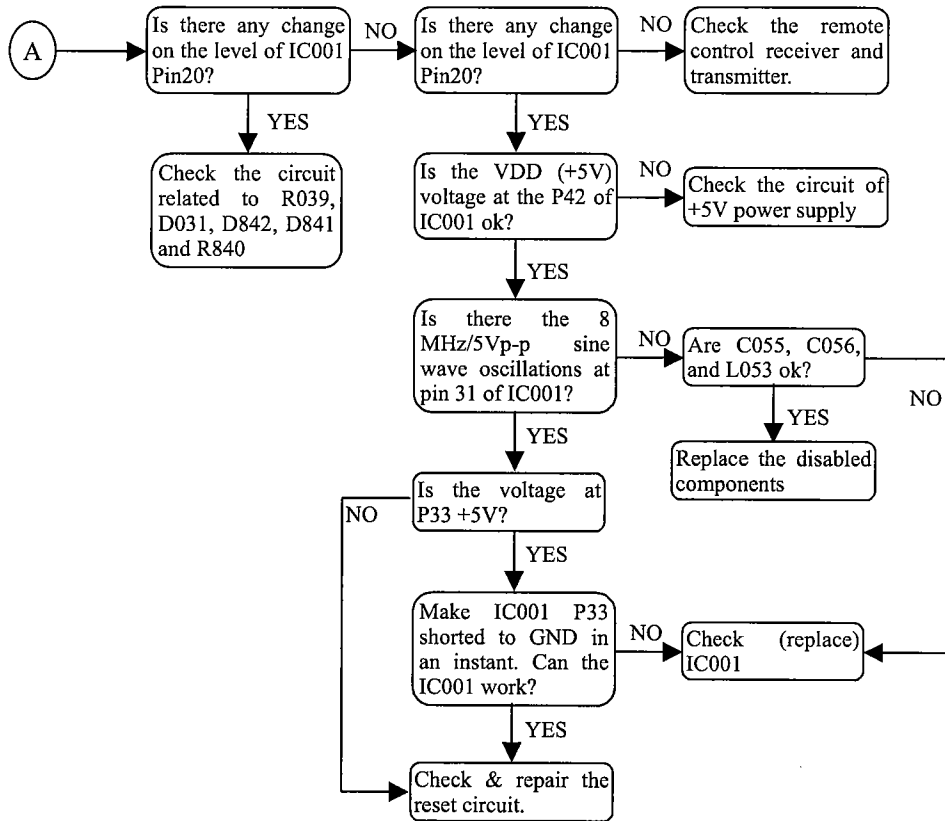
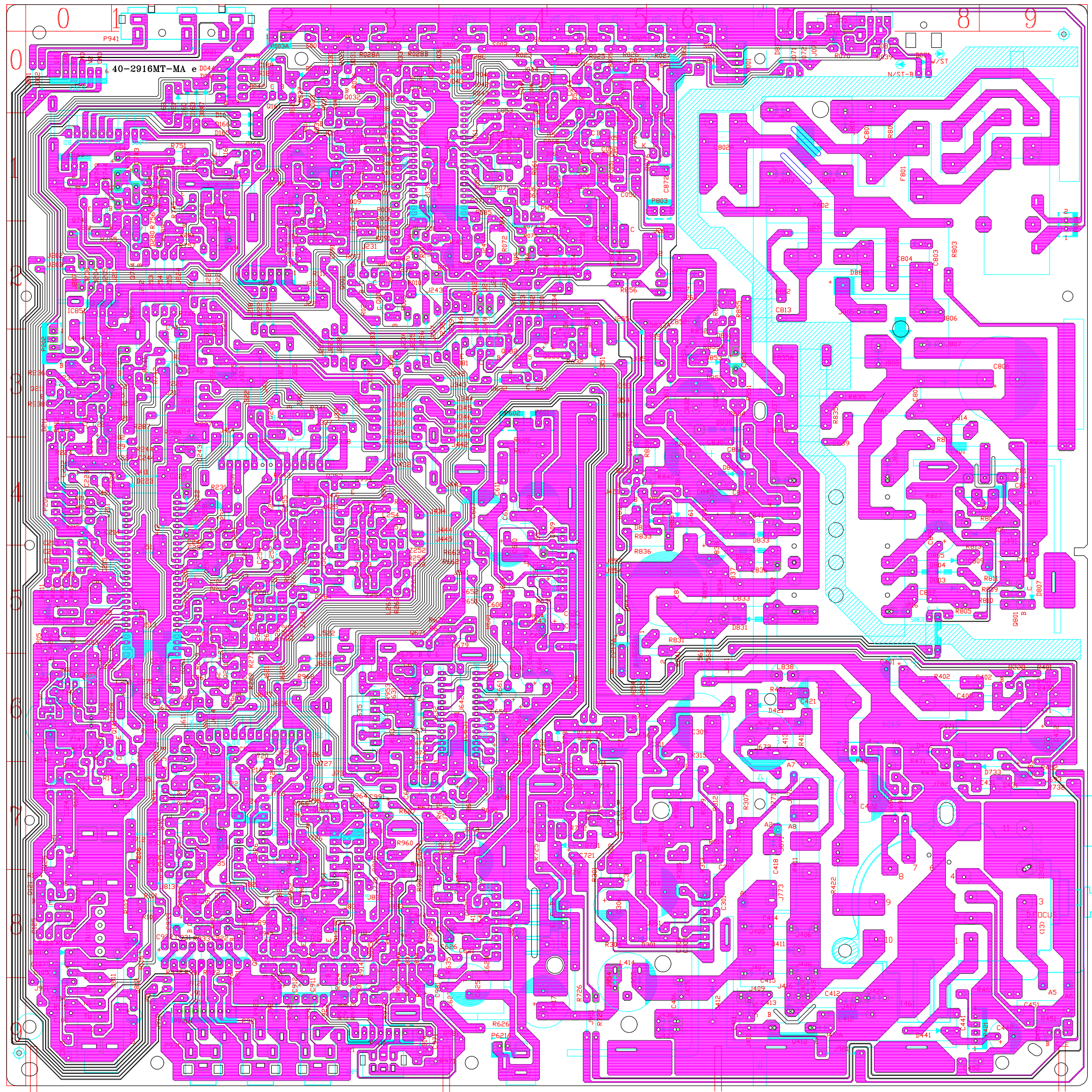


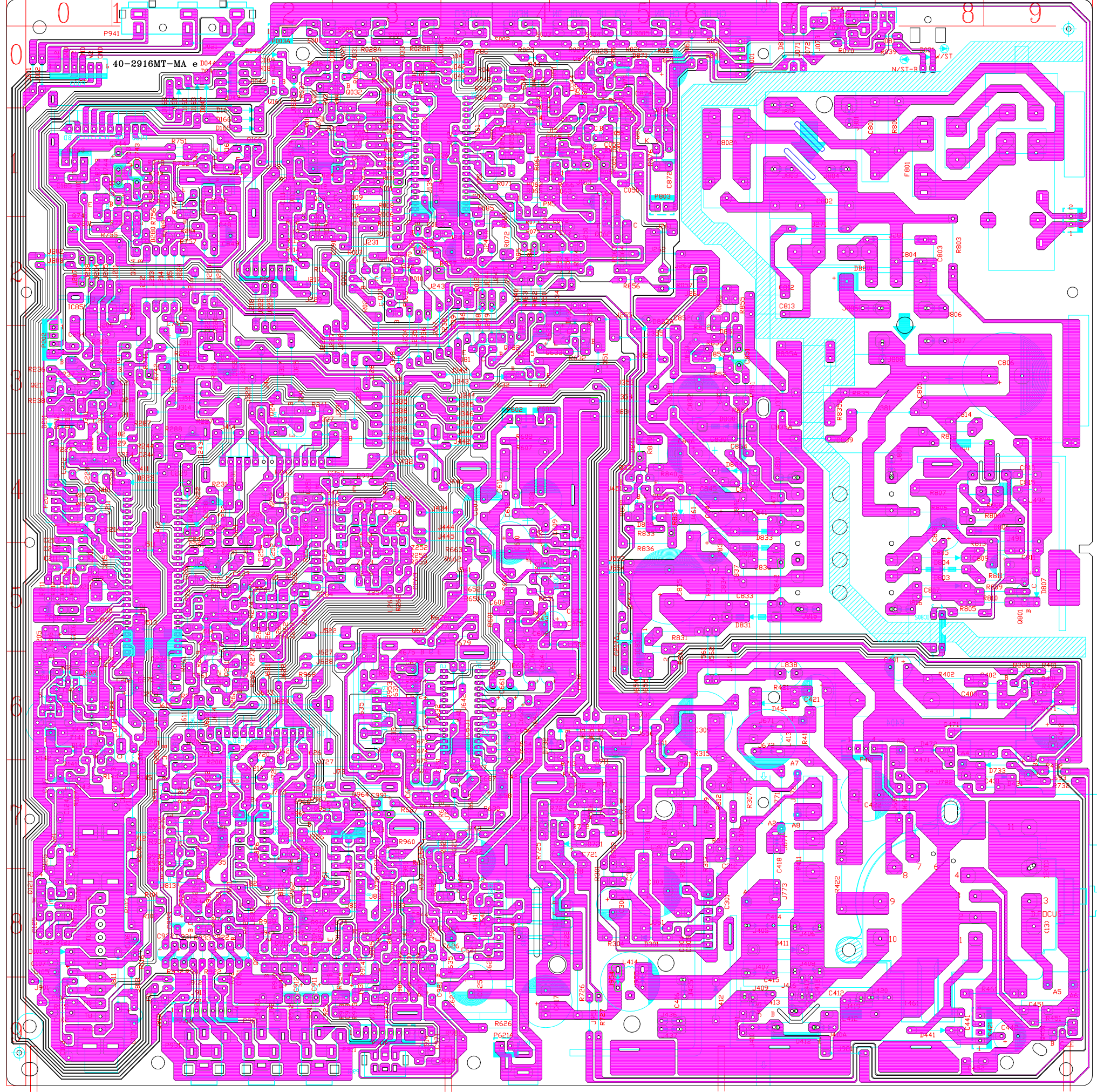
Fig.7 Tuning control not working (2)

PART VII. (MB) PCB Layout Diagram



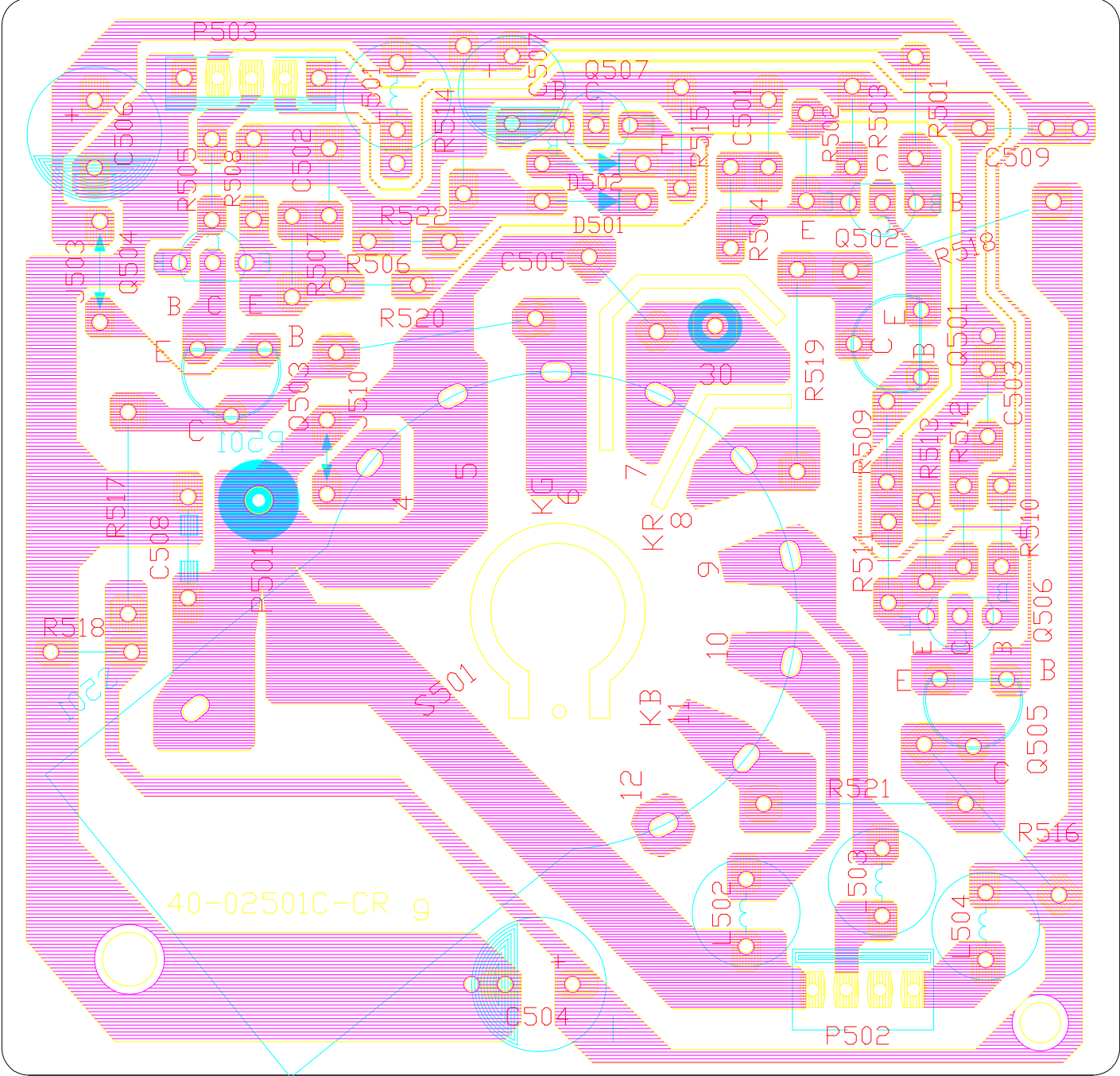
40-2916MT-MA e D04

P941

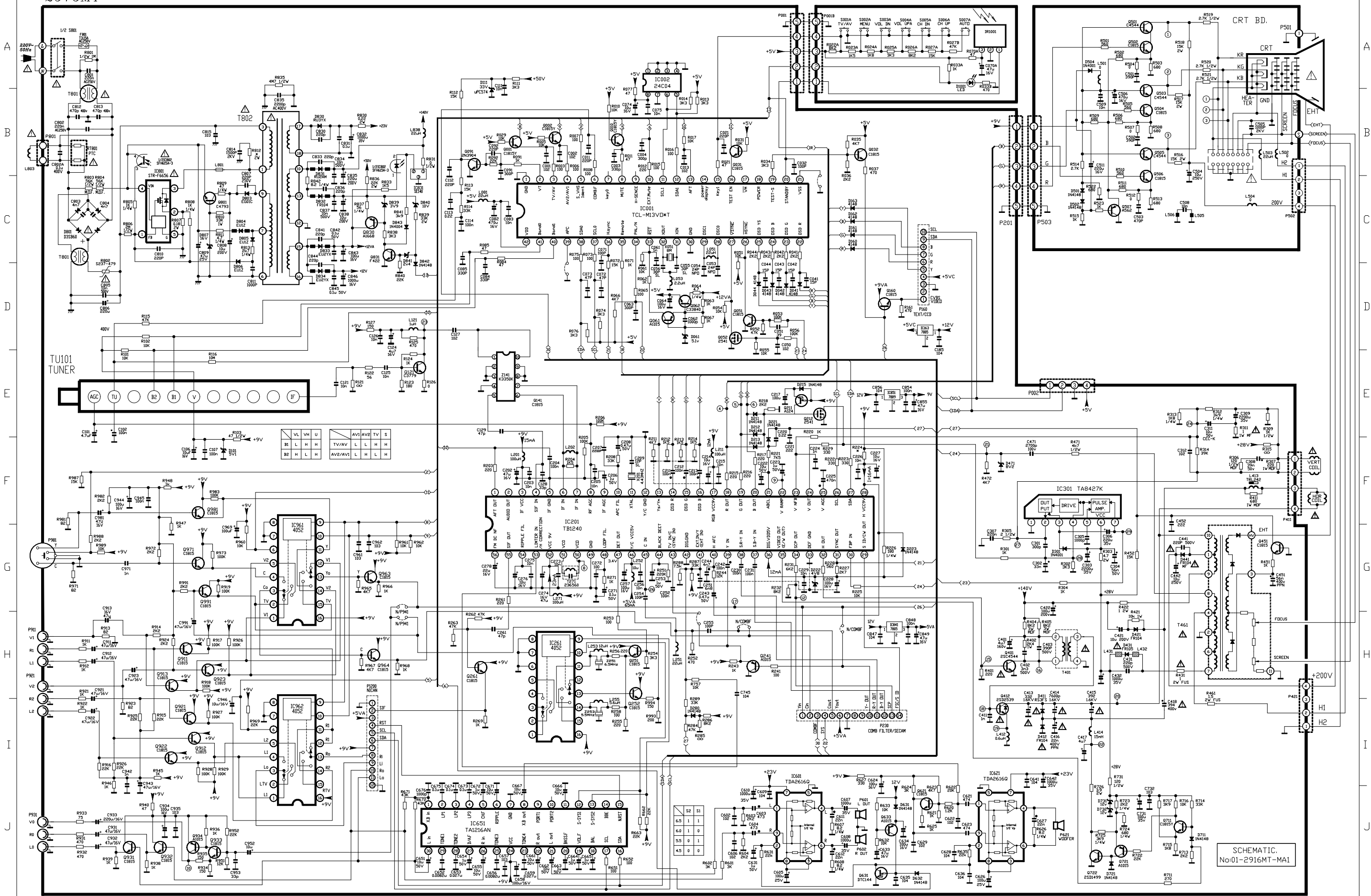


40-2916MT-MA e D04

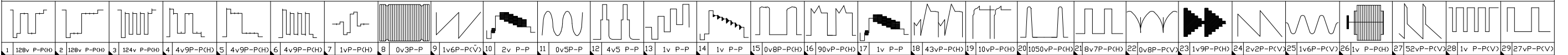
P941

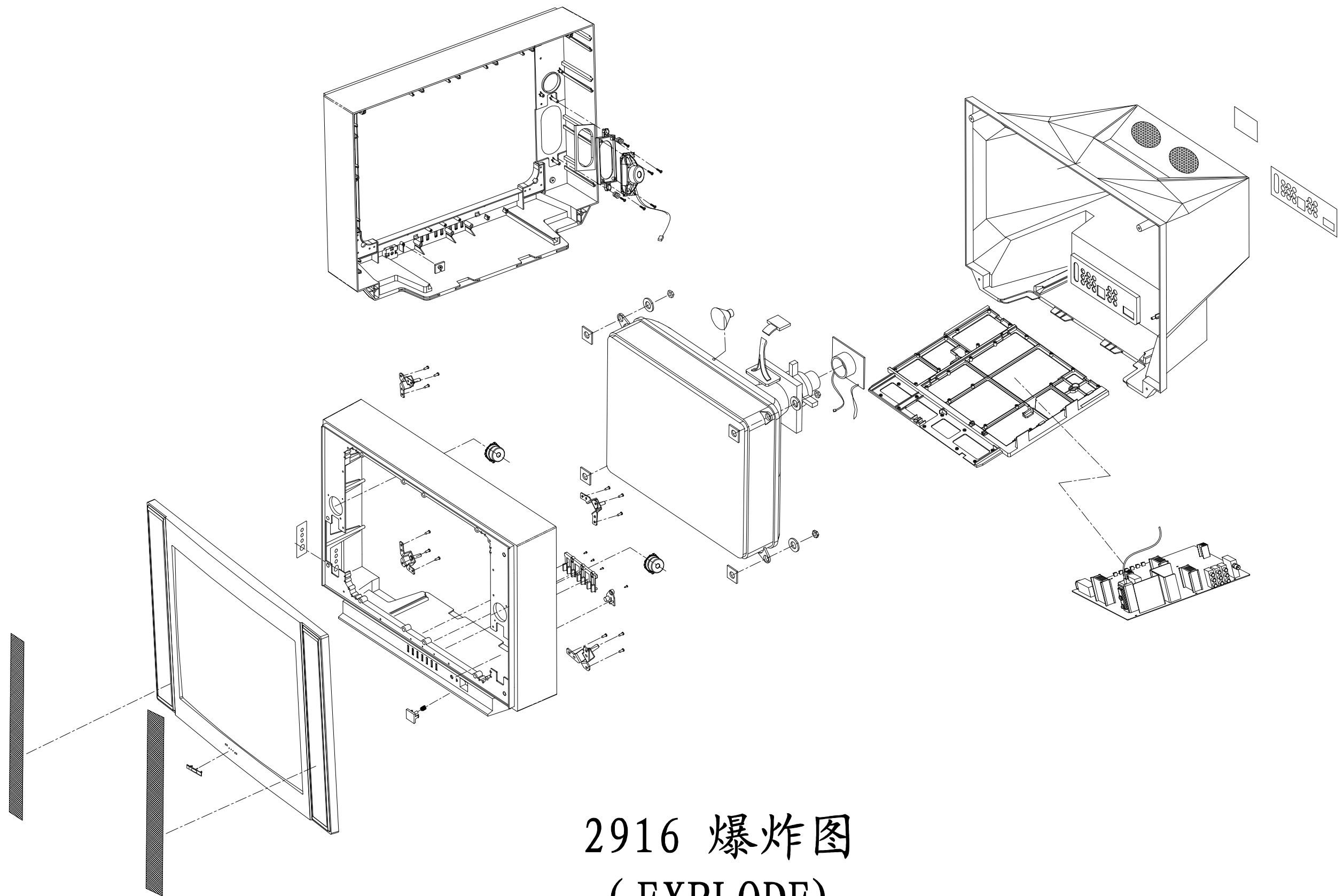


2916MT



SCHEMATIC. No.01-2916MT-MA1





2916 爆炸图
(EXPLODE)

Part no	Desc	qty	loc
T8-0B166T-NIY	ASS'Y - NICAM BD	1	
11-SC1815-YBX	TRANSISTOR 2SC1815Y	1	Q1001
13-P3410G-8BP	IC MSP 3410G B8	1	IC1001
18-CB0101-JNX	RES. C.F. 100 OHM 1/6W +/-5%	1	R1011
18-CB0101-JNX	RES. C.F. 100 OHM 1/6W +/-5%	1	R1014
18-CB0101-JNX	RES. C.F. 100 OHM 1/6W +/-5%	1	R1017
18-CB0101-JNX	RES. C.F. 100 OHM 1/6W +/-5%	1	R1018
18-CB0102-JNX	RES. C.F. 1K OHM 1/6W +/-5%	1	R1022
18-CB0102-JNX	RES. C.F. 1K OHM 1/6W +/-5%	1	R1023
18-CB0152-JNX	RES. C.F. 1.5k OHM 1/6W +/-5%	1	R1002
18-CB0332-JNX	RES. C.F. 3.3k OHM 1/6W +/-5%	1	R1003
18-CB0470-JNX	RES. C.F. 47 OHM 1/6W +/-5%	1	R1001
18-CB0472-JNX	RES. C.F. 4.7k OHM 1/6W +/-5%	1	R1019
18-CB0472-JNX	RES. C.F. 4.7k OHM 1/6W +/-5%	1	R1020
18-CB0472-JNX	RES. C.F. 4.7k OHM 1/6W +/-5%	1	R1015
26-ABC152-KBX	CAP. CER 1500 PF 50V +/-10% B	1	C1017
26-ABC272-KBX	CAP. CER 2700 PF 50V +/-10% B	1	C1006
26-ABC272-KBX	CAP. CER 2700 PF 50V +/-10% B	1	C1007
26-ABC339-CZX	CAP. CER 3.3 PF 50V +/-0.25 SL	1	C1026
26-ABC339-CZX	CAP. CER 3.3 PF 50V +/-0.25 SL	1	C1027
26-EBP102-KBX	CAP. CER 1000 PF 50V +/-10% B	1	C1008
26-EBP102-KBX	CAP. CER 1000 PF 50V +/-10% B	1	C1009
26-EBP102-KBX	CAP. CER 1000 PF 50V +/-10% B	1	C1010
26-EBP102-KBX	CAP. CER 1000 PF 50V +/-10% B	1	C1011
26-EBP103-ZFX	CAP. CER 0.01UF 50V +80/-20% F	1	C1002
26-EBP104-ZFX	CAP. CER 0.1UF 50V +80%/-20%	1	C1004
26-EBP104-ZFX	CAP. CER 0.1UF 50V +80%/-20%	1	C1012
26-EBP104-ZFX	CAP. CER 0.1UF 50V +80%/-20%	1	C1019
26-EBP104-ZFX	CAP. CER 0.1UF 50V +80%/-20%	1	C1021
26-EBP104-ZFX	CAP. CER 0.1UF 50V +80%/-20%	1	C1023
26-EBP471-JCX	CAP. CER 470PF 50V +/-5% CH	1	C1018
26-EBP560-JCX	CAP. CER 56PF 50V +/-5%	1	C1025
26-EBP560-JCX	CAP. CER 56PF 50V +/-5%	1	C1024
26-EBP560-JCX	CAP. CER 56PF 50V +/-5%	1	C1028
27-MBC334-JOX	CAP. M.P.E 0.33UF 63V +/-5%	1	C1029
27-MBC334-JOX	CAP. M.P.E 0.33UF 63V +/-5%	1	C1030
27-PBC102-JOX	CAP. P.E 0.001UF 63V +/-5%	1	C1031
34-R100J2-OEX	COIL PL - 10 UH +/-5%	1	L1001
41-WJ0060-B00	WIRE BARE JUMPER 6mm	1	J1011
41-WJ0065-B00	WIRE BARE JUMPER 6.5MM	1	J1003
41-WJ0065-B00	WIRE BARE JUMPER 6.5MM	1	J1014
41-WJ0075-B00	WIRE BARE JUMPER 7.5MM	1	J1001
41-WJ0075-B00	WIRE BARE JUMPER 7.5MM	1	J1002
41-WJ0090-B00	WIRE BARE JUMPER 9MM	1	J1009
41-WJ0090-B00	WIRE BARE JUMPER 9MM	1	J1012
41-WJ0090-B00	WIRE BARE JUMPER 9MM	1	J1013
41-WJ0090-B00	WIRE BARE JUMPER 9MM	1	J1010
41-WJ0150-B00	WIRE BARE JUMPER 15MM	1	J1004
41-WJ0150-B00	WIRE BARE JUMPER 15MM	1	J1005
41-WJ0150-B00	WIRE BARE JUMPER 15MM	1	J1006
41-WJ0150-B00	WIRE BARE JUMPER 15MM	1	J1007
41-WJ0150-B00	WIRE BARE JUMPER 15MM	1	J1008
45-OSC18M-4Y0	CRYSTAL 18.432M	1	X1001
40-2918NT-NIB	P. C. B. NICAM BD	1	
18-CB0224-JNX	RES. C.F. 220k OHM 1/6W +/-5%	1	R1006
18-CB0224-JNX	RES. C.F. 220k OHM 1/6W +/-5%	1	R1008

Part no	Desc	qty	loc
11-SC1815-YBX	TRANSISTOR 2SC1815Y	1	Q1002
11-SC1815-YBX	TRANSISTOR 2SC1815Y	1	Q1003
41-WJ0150-B00	WIRE BARE JUMPER 15MM	1	J1015
25-BCB100-M1X	CAP. ELEC 10 UF 16V +/-20%	1	C1003
25-BCB100-M1X	CAP. ELEC 10 UF 16V +/-20%	1	C1014
25-BCB100-M1X	CAP. ELEC 10 UF 16V +/-20%	1	C1015
25-BCB100-M1X	CAP. ELEC 10 UF 16V +/-20%	1	C1016
25-BCB100-M1X	CAP. ELEC 10 UF 16V +/-20%	1	C1022
25-BCB100-M1X	CAP. ELEC 10 UF 16V +/-20%	1	C1033
25-BCB100-M1X	CAP. ELEC 10 UF 16V +/-20%	1	C1034
25-BCB220-M1X	CAP. ELEC 22 UF 16V +/-20%	1	C1032
25-BCB470-M1X	CAP. ELEC 47 UF 16V +/-20%	1	C1001
25-BCB470-M1X	CAP. ELEC 47 UF 16V +/-20%	1	C1013
25-BFB109-M1X	CAP. ELEC 1 UF 50V +/-20%	1	C1005
25-BFB339-M1X	CAP. ELEC 3.3 UF 50V +/-20%	1	C1020
T8-OB166T-RCY	ASS'Y REAR CABINET	1	
54-114000-00X	FELT TAPE (150mmX19mmX0.3mm)	9	STICK ON REAR CABINET
55-B166RC-0AN	REAR CABINET	1	
58-B166MP-OUI	PLATE MODEL NO.	1	
58-B166SI-3UI	INLAY SIDE AV	1	
58-B168RI-IUI	INLAY REAR AV	1	
59-130460-00X	RUBBER PAD (25mmX7mm)	2	FOR REAR CABINET FOOT
63-B40200-AB3	S/T SCREW B 4 X 20 AB	10	MTG REAR CABINET & FRONT CABINET
63-F30100-BT3	S/T SCREW F 3 X 10 BT (BLACK)	2	MTG RCA JACK & REAR CAB.
T8-B166MT-PAN	ASS'Y - PACKING	1	
62-275340-OHD	CARTON BOX HOLDER (3, 4)	4	
72-B166MT-E31	OPERATION MANUAL	1	
74-022032-6WE	POLYBAG (23cmX34cmX0.06mm)	1	
74-130130-80HAA	POLYBAG W/SUFFOCATION WARNING	1	
75-380080-CC0	POLYFOAM	1	
75-B166LL-CC0	POLYFOAM "LL"	1	
75-B166LR-CC0	POLYFOAM "LR"	1	
75-B166UL-CC0	POLYFOAM "UL"	1	
75-B166UR-CC0	POLYFOAM "UR"	1	
76-A29166-0AT	CARTON BOX	1	
T8-OB166T-AVY	ASS'Y - SIDE AV BD	1	
40-29166T-SIA	P. C. B. SIDE AV BD	1	
41-WJ0050-B00	WIRE BARE JUMPER 5MM	1	C955
41-WJ0050-B00	WIRE BARE JUMPER 5MM	1	C954
41-WJ0050-B00	WIRE BARE JUMPER 5MM	1	C963
41-WJ0050-B00	WIRE BARE JUMPER 5MM	1	L961
41-WJ0065-B00	WIRE BARE JUMPER 6.5MM	1	JM13B
41-WJ0065-B00	WIRE BARE JUMPER 6.5MM	1	R952
41-WJ0065-B00	WIRE BARE JUMPER 6.5MM	1	R953
41-WJ0065-B00	WIRE BARE JUMPER 6.5MM	1	R967
41-WJ0065-B00	WIRE BARE JUMPER 6.5MM	1	J953
41-WJ0070-B00	WIRE BARE JUMPER 7MM	1	FOR Q963(S) & C951(-)
41-WJ0070-B00	WIRE BARE JUMPER 7MM	1	J952
41-WJ0125-B00	WIRE BARE JUMPER 12.5MM	1	JM13A
47-RCA002-XX0	RCA SOCKET AV-8.4-6 (WHITE)	1	P951L
47-RCA003-XX0	RCA SOCKET AV-8.4-6 (YELLOW)	1	P951V
47-RCA017-XX0	RCA JACK RED (RCA-101P) (THREE FEET)	1	P951R
63-W30100-AB4	S/T SCREW W 3 X 10 AB	2	MTG SIDE AV BD & REAR CAB.
46-27626W-06X	PIN BASE *6 TJC3-6AW	1	FOR SIDE AV BD P902
T8-OB166T-IRY	ASS'Y - RECEIVER BD	1	
11-IRR001-2X1	IR RECEIVER MODULE HRM138AA1700	1	IR1001
14-LED03R-XX0	LED RED HFR103 (3MM)	1	D1001

Part no	Desc	qty	loc	
18-CB0102-JNX	RES. C.F. 1K OHM 1/6W +/-5%	1	R033A	
18-CB0470-JNX	RES. C.F. 47 OHM 1/6W +/-5%	1	R070A	
18-CB0471-JNX	RES. C.F. 470 OHM 1/6W +/-5%	1	R033B	
40-29166T-IRA	P.C.B. IR RECEIVE BD	1		
25-BCB470-M1X	CAP. ELEC 47 UF 16V +/-20%	1	C070A	
46-39161H-05X	HS 5P 2468#24 400mm TJC3-5Y/JC25-5Y	1		P001B FOR M. BD P001
T8-0B166T-KEY	ASS'Y - KEY BD	1		
18-CB0152-JNX	RES. C.F. 1.5k OHM 1/6W +/-5%	1	R023A	
18-CB0153-JNX	RES. C.F. 15k OHM 1/6W +/-5%	1	R027A	
18-CB0182-JNX	RES. C.F. 1.8K OHM 1/6W +/-5%	1	R024A	
18-CB0332-JNX	RES. C.F. 3.3k OHM 1/6W +/-5%	1	R025A	
18-CB0822-JNX	RES. C.F. 8.2K OHM 1/6W +/-5%	1	R026A	
40-29166T-KEA	P.C.B. KEY BD	1		
46-38628H-02X	HS 2P 2468#24 850 TJC3-2Y/JC25-2Y	1		P004A FOR M. BD P003A
48-TAC001-XX0	TACT SWITCH	1	S001A	
48-TAC001-XX0	TACT SWITCH	1	S002A	
48-TAC001-XX0	TACT SWITCH	1	S003A	
48-TAC001-XX0	TACT SWITCH	1	S004A	
48-TAC001-XX0	TACT SWITCH	1	S005A	
48-TAC001-XX0	TACT SWITCH	1	S006A	
T8-0B166T-SWY	ASS'Y - SWITCH BD	1		
40-29166T-SWA	P.C.B. SWITCH BD	1		
41-WJ0050-B00	WIRE BARE JUMPER 5MM	1	J880A	
41-WJ0050-B00	WIRE BARE JUMPER 5MM	1	J880B	
46-28559W-02X	PIN BASE *2 TJC1-2A	1	S801	
48-POW001-AX0	SWITCH POWER	1	SW801	
51-JC0243-0CH01	POWER CORD SAA PLUG W/HOUSING	1		
54-295210-0V0	FIBER WASHER	1		FOR POWER CORD
63-W30100-AB4	S/T SCREW W 3 X 10 AB	1		MTG POWER CORD & M. BD BKT
46-10967W-01X	PIN BASE *1 TJC1-1A	1	P801A	
46-10967W-01X	PIN BASE *1 TJC1-1A	1	P801B	
46-39132H-02X	HS 2P 1617#22 300mm TJC1-2Y/TJC1-1Y	1		FOR P801A, P801B
T8-0B166T-CR1	ASS'Y - CRT BD	1		
10-1N4148-ABX	DIODE 1N4148 (SWITCHING)	1	D501	
10-1N4148-ABX	DIODE 1N4148 (SWITCHING)	1	D502	
10-1N4148-ABX	DIODE 1N4148 (SWITCHING)	1	L501	
11-A562TM-0BX	TRANSISTOR 2SA562TM-0	1	Q507	
11-SC1815-YBX	TRANSISTOR 2SC1815Y	1	Q502	
11-SC1815-YBX	TRANSISTOR 2SC1815Y	1	Q504	
11-SC1815-YBX	TRANSISTOR 2SC1815Y	1	Q506	
18-CB0102-JNX	RES. C.F. 1K OHM 1/6W +/-5%	1	R515	
18-CB0272-JNX	RES. C.F. 2.7k OHM 1/6W +/-5%	1	R514	
18-CB0561-JNX	RES. C.F. 560 OHM 1/6W +/-5%	1	R501	
18-CB0561-JNX	RES. C.F. 560 OHM 1/6W +/-5%	1	R505	
18-CB0561-JNX	RES. C.F. 560 OHM 1/6W +/-5%	1	R510	
18-CB0681-JNX	RES. C.F. 680 OHM 1/6W +/-5%	1	R502	
18-CB0681-JNX	RES. C.F. 680 OHM 1/6W +/-5%	1	R506	
18-CB0681-JNX	RES. C.F. 680 OHM 1/6W +/-5%	1	R509	
18-CB0681-JNX	RES. C.F. 680 OHM 1/6W +/-5%	1	R511	
18-CB0681-JNX	RES. C.F. 680 OHM 1/6W +/-5%	1	R522	
18-CB0681-JNX	RES. C.F. 680 OHM 1/6W +/-5%	1	R503	
18-CB0681-JNX	RES. C.F. 680 OHM 1/6W +/-5%	1	R508	
18-CB0681-JNX	RES. C.F. 680 OHM 1/6W +/-5%	1	R513	
18-FE0272-JNX	RES. M.O. 2.7K OHM 1/2W +/-5%	1	R519	
18-FE0272-JNX	RES. M.O. 2.7K OHM 1/2W +/-5%	1	R520	
18-FE0272-JNX	RES. M.O. 2.7K OHM 1/2W +/-5%	1	R521	
18-FG0183-JHX	RES. M.O. 18K OHM 2W +/-5%	1	R516	

Part no	Desc	qty	loc	
18-FG0183-JHX	RES. M. O. 18K OHM 2W +/-5%	1	R517	
18-FG0183-JHX	RES. M. O. 18K OHM 2W +/-5%	1	R518	
25-BLA100-M1X	CAP. ELEC 10 UF 250V +/-20%	1	C504	
26-AMK182-KRX	CAP. CER 1800PF 2KV +/-10% R	1	C505	
26-EBP103-ZFX	CAP. CER 0.01UF 50V +80/-20% F	1	C508	
26-EBP103-ZFX	CAP. CER 0.01UF 50V +80/-20% F	1	C509	
26-EBP391-JCX	CAP. CER. 390PF 50V +/-5% CH	1	C501	
26-EBP471-JCX	CAP. CER 470PF 50V +/-5% CH	1	C503	
26-EBP471-JCX	CAP. CER 470PF 50V +/-5% CH	1	C502	
34-R220K2-1BX	COIL CHOKE 22 UH +/-10%	1	L502	
35-237250-00X	FERR. BEAD HF70	2		FOR C508 (L505 & L506)
40-2980UA-CRA	P. C. B. CRT BD	1		
41-WJ0050-B00	WIRE BARE JUMPER 5MM	1	L504	
41-WJ0050-B00	WIRE BARE JUMPER 5MM	1	L503	
41-WJ0060-B00	WIRE BARE JUMPER 6mm	1	R504	
41-WJ0060-B00	WIRE BARE JUMPER 6mm	1	R507	
41-WJ0060-B00	WIRE BARE JUMPER 6mm	1	R512	
41-WJ0075-B00	WIRE BARE JUMPER 7.5MM	1	J503	
46-10967W-01X	PIN BASE *1 TJC1-1A	1		P501 FOR CRT GROUNDING HOUS.
46-30615H-04X	HS 4P24 460 F/W TJC3-4Y/SCN-4	1		P502 FOR M. BD P421
46-37030H-05X	HS 5P 2468#24 450 TJC3-5Y/SCN	1		P503 FOR M. BD P201
47-316380-007	CRT SOCKET GZS10-301H	1	S501	
11-SC4544-OAX	TRANSISTOR 2SC4544	1	Q501	
11-SC4544-OAX	TRANSISTOR 2SC4544	1	Q503	
11-SC4544-OAX	TRANSISTOR 2SC4544	1	Q505	
25-BCB471-M1X	CAP. ELEC 470 UF 16V +/-20%	1	C506	
T8-OB166T-DFY	ASS'Y - DYNAMIC FOCUS	1		
18-FG0120-JHX	RES. M. O. 12 OHM 2W +/-5%	1	R1501	
18-FG0120-JHX	RES. M. O. 12 OHM 2W +/-5%	1	R1502	
27-AGQ224-JOX	CAP. M. PP 0.22 UF 250V +/-5%	1	C1504	
27-AGQ824-JOX	CAP. M. PP 0.82 UF 250V +/-5%	1	C1506	
36-DFC001-XX0	FOCALIZING TRANS.	1	T1501	
40-2980UA-DPC	P. C. B. DPC BD	1		
46-20598W-04X	PIN BASE *4 TJC1-4A	1	P1501	FOR M. BD A1' & A2&A5&A6
64-B30080-104	M/C SCREW B 3 X 8	2		MTG D. F BD & IC301 (H. SINK)
65-Z30050-23M	NUT M 3	2		
T8-OB166T-PW1	ASS'Y - POWER PARTS "AUST"	1		
10-ORU4YX-FOX	DIODE RU4YX (FAST RECOVERY)	1	D830	
10-1N4004-EBX	DIODE 1N4004 (RECTIFIER)	1	D843	
10-1N4148-ABX	DIODE 1N4148 (SWITCHING)	1	D842	
11-0BF422-OBX	TRANSISTOR BF422 (NPN)	1	Q831	
11-SB649A-OAX	TRANSISTOR 2SB649A	1	Q830	
11-SC4793-OAX	STANSISTOR 2SC4793	1	Q801	
13-00SE14-ONS	IC SE140N	1	IC831	
13-SFH615-A3P	PHOTO COUPLER SFH615A3C	1	IC802	
13-STRF66-56P	IC STR-F6656	1	IC801	
18-CB0152-JNX	RES. C. F. 1.5k OHM 1/6W +/-5%	1	R833	
18-CB0223-JNX	RES. C. F. 22k OHM 1/6W +/-5%	1	R840	
18-CB0332-JNX	RES. C. F. 3.3k OHM 1/6W +/-5%	1	R838	
18-CB0392-JNX	RES. C. F. 3.9K OHM 1/6W +/-5%	1	R841	
18-CD0102-JNX	RES. C. F. 1k OHM 1/4W +/-5%	1	R805	
18-CD0102-JNX	RES. C. F. 1k OHM 1/4W +/-5%	1	R808	
18-CD0272-JNX	RES. C. F. 2.7K OHM 1/4W +/-5%	1	R813	
18-CD0470-JNX	RES. C. F. 47 OHM 1/4W +/-5%	1	R809	
18-CD0479-JNX	RES. C. F. 4.7 OHM 1/4W +/-5%	1	R811	
18-CD0560-JNX	RES. C. F. 56 OHM 1/4W +/-5%	1	R837	
18-CD0829-JNX	RES. C. F. 8.2 OHM 1/4W +/-5%	1	R842	

Part no	Desc	qty	loc
18-CE0105-JNX	RES. C. F. 1M OHM 1/2W +/-5%	1	R806
18-CE0105-JNX	RES. C. F. 1M OHM 1/2W +/-5%	1	R806A
18-CE0563-JNX	RES. C. F. 56k OHM 1/2W +/-5%	1	R803
18-CE0563-JNX	RES. C. F. 56k OHM 1/2W +/-5%	1	R804
18-FG0223-JHX	RES. M. O. 22K OHM 2W +/-5%	1	R836
18-FG0333-JHX	RES. M. O. 33K OHM 2W +/-5%	1	R810
18-FG0333-JHX	RES. M. O. 33K OHM 2W +/-5%	1	R839
18-GG0158-JHX	RES WIRE ROUND 0.15 OHM 2W 5%	1	R807
18-GG0228-JHX	RES WIRE ROUND 0.22 OHM 2W 5%	1	R830
22-NTC479-XX0	NTC 4.7 OHM +/-18% NTC4.7D2-14	1	R802
22-PTC140-XX0	POSISTOR 14 OHM	1	RT801
25-BKA100-M1X	CAP. ELEC 10 UF 200V +/-20%	1	C808
25-BKA100-M1X	CAP. ELEC 10 UF 200V +/-20%	1	C838
25-BKJ221-M1X	CAP. ELEC 220 UF 200V +/-20%	1	C835
25-BMJ221-M1X	CAP. ELEC 220 UF 400V +/-20%	1	C806
26-AIC221-KBX	CAP. CER 220 PF 500V +/-10% B	1	C830
26-AIC221-KBX	CAP. CER 220 PF 500V +/-10% B	1	C833
26-AIC221-KBX	CAP. CER 220 PF 500V +/-10% B	1	C836
26-AIC221-KBX	CAP. CER 220 PF 500V +/-10% B	1	C841
26-AIC221-KBX	CAP. CER 220 PF 500V +/-10% B	1	C844
26-AIM103-KBX	CAP. CER 0.01UF 500V +/-10% B	1	C805
26-AIM103-KBX	CAP. CER 0.01UF 500V +/-10% B	1	C834
26-AIM103-KBX	CAP. CER 0.01UF 500V +/-10% B	1	C837
26-AKK222-KRX	CAP. CER 2200 PF 1KV +/-10% R	1	C814
26-AMK221-JZX	CAP. CER 220pF 2KV +/-5% SL	1	FOR P2 - P3 OF IC801
26-AMK221-JZX	CAP. CER 220pF 2KV +/-5% SL	1	C807
26-APK222-ME4	CAP. CER 2200PF 400VAC +/-20% E	1	C839
26-APK471-KB4	CAP. CER 470 pF 400VAC +/-10%	1	C812
26-APK471-KB4	CAP. CER 470 pF 400VAC +/-10%	1	C813
26-AQK472-ZFX	CAP. CER 4700PF 250VAC+80-20%F	1	C803
26-AQK472-ZFX	CAP. CER 4700PF 250VAC+80-20%F	1	C804
26-EBP102-KBX	CAP. CER 1000 PF 50V +/-10% B	1	C811
26-EBP103-ZFX	CAP. CER 0.01UF 50V +80/-20% F	1	C815
26-EBP104-ZFX	CAP. CER 0.1UF 50V +80%/-20%	1	C847
26-EBP104-ZFX	CAP. CER 0.1UF 50V +80%/-20%	1	C848
26-EBP104-ZFX	CAP. CER 0.1UF 50V +80%/-20%	1	C854
26-EBP104-ZFX	CAP. CER 0.1UF 50V +80%/-20%	1	C856
26-EBP104-ZFX	CAP. CER 0.1UF 50V +80%/-20%	1	C831
26-EBP104-ZFX	CAP. CER 0.1UF 50V +80%/-20%	1	C842
26-EBP104-ZFX	CAP. CER 0.1UF 50V +80%/-20%	1	C845
26-EBP221-JCX	CAP. CER 220PF 50V +/-5% CH	1	C810
27-MHM104-KOX	CAP. METAL P. E. 0.1UF 400V 10%	1	C802A
34-A608K6-1BX	COIL CHOKE 0.6 UH +/-10%	1	L801
34-R220K2-1BX	COIL CHOKE 22 UH +/-10%	1	L838
35-237250-00X	FERR. BEAD HF70	2	FOR D804
35-237250-00X	FERR. BEAD HF70	2	FOR D831
35-237250-00X	FERR. BEAD HF70	2	FOR D832
35-237250-00X	FERR. BEAD HF70	2	FOR D833
35-237250-00X	FERR. BEAD HF70	2	FOR D834
35-237250-00X	FERR. BEAD HF70	2	FOR D830
36-LIF002-XX0	LINE FILTER 20mH	1	T803
36-LIF005-XX0	LINE FILTER LCL-2826	1	T801
41-WJ0050-B00	WIRE BARE JUMPER 5MM	1	J802
41-WJ0050-B00	WIRE BARE JUMPER 5MM	1	J804
41-WJ0050-B00	WIRE BARE JUMPER 5MM	1	J805
41-WJ0050-B00	WIRE BARE JUMPER 5MM	1	J806
41-WJ0050-B00	WIRE BARE JUMPER 5MM	1	J807

Part no	Desc	qty	loc	
41-WJ0050-B00	WIRE BARE JUMPER 5MM	1	J808	
41-WJ0065-B00	WIRE BARE JUMPER 6.5MM	1	J451	
41-WJ0075-B00	WIRE BARE JUMPER 7.5MM	1	J471	
41-WJ0100-B00	WIRE BARE JUMPER 10MM	1	J371	
41-WJ0100-B00	WIRE BARE JUMPER 10MM	1	J654	
41-WJ0100-B00	WIRE BARE JUMPER 10MM	1	J655	
41-WJ0125-B00	WIRE BARE JUMPER 12.5MM	1	J361	
41-WJ0125-B00	WIRE BARE JUMPER 12.5MM	1	J492	
41-WJ0125-B00	WIRE BARE JUMPER 12.5MM	1	R831	
41-WJ0145-B00	WIRE BARE JUMPER 14.5MM	1	J491	
41-WJ0150-B00	WIRE BARE JUMPER 15MM	1	R812	
41-WJ0155-B00	WIRE BARE JUMPER 15.5MM	1	J561	
41-WJ0155-B00	WIRE BARE JUMPER 15.5MM	1	J562	
41-WJ0175-B00	WIRE BARE JUMPER 17.5MM	1	J281	
41-WJ0175-B00	WIRE BARE JUMPER 17.5MM	1	J271	
41-WJ0180-B00	WIRE BARE JUMPER 18MM	1	J353	
41-WJ0190-B00	WIRE BARE JUMPER 19MM	1	J354	
41-WJ0200-B00	WIRE BARE JUMPER 20MM	1	J381	
46-10962W-02X	PIN BASE *2 TJC2-2A	1		P801 FOR DEGAUSSING COIL
46-28559W-02X	PIN BASE *2 TJC1-2A	1	P802A	FOR F. CTL BD
64-B30120-104	M/C SCREW B 3 X 12	1		FOR IC 801
64-P30080-104	M/C SCREW P 3 X 8	1		FOR IC841
64-P30080-104	M/C SCREW P 3 X 8	1		FOR IC851
64-P30080-104	M/C SCREW P 3 X 8	2		FOR IC 801
65-Z30050-23M	NUT M 3	1		FOR IC801
66-20516X-0B0	FUSE HOLDER	2		FOR F801
66-343730-0B0	HOLLOW RIVET 1.6X3.0XL3.2	4		FOR T802
66-343730-0B0	HOLLOW RIVET 1.6X3.0XL3.2	2		FOR DB801
67-H10918-4M2	HEAT SINK	2		FOR IC841 & IC851
67-H29550-8A0	HEAT SINK	1		FOR IC801
67-H34692-0A0	HEAT SINK	1		FOR IC801
10-79C10V-DBX	DIODE ZENER 10V 1/2W 5%	1	D840	
10-79C16V-DBX	DIODE ZENER 16V 1/2W 5%	1	D807	
10-79C2V4-DBX	DIODE ZENER 2V4 1/2W 5%	1	D841	
10-79C3V9-DBX	DIODE ZENER 3V9 1/2W 5%	1	D839	
10-0FR104-FBX	DIODE FR104 (FAST RECTIFIER)	1	D832	
36-TRF001-AX2	TRANSFORMER CONV. BCK-4901-77	1	T802	
18-KE0105-JN3	RES. H. VOLT. CC 1M OHM 1/2W +/-5%	1	R801	
18-KF0825-JH3	RES. H. VOLT. CC 8.2M OHM 1W +/-5%	1	R835	
27-AQT224-MVH	CAP. M. PP 0.22 UF 250VAC 20%	1	C801	
27-AQT224-MVH	CAP. M. PP 0.22 UF 250VAC 20%	1	C802	
66-343740-0B0	HOLLOW RIVET (2.3mmx4.0mmx3.5mm)	2		FOR D830
25-BCA102-M1X	CAP. ELEC 1000 UF 16V +/-20%	1	C846	
25-BCB331-M1X	CAP. ELEC 330 UF 16V +/-20%	1	C843	
25-BCB470-M1X	CAP. ELEC 47 UF 16V +/-20%	1	C849	
25-BCB470-M1X	CAP. ELEC 47 UF 16V +/-20%	1	C855	
25-BDB470-M1X	CAP. ELEC 47 UF 25V +/-20%	1	C809	
25-BEA102-M1X	CAP. ELEC 1000 UF 35V +/-20%	1	C832	
50-03150D-IUS7	FUSE 250V/3.15A	1	F801	
10-0EU2YX-FBX	DIODE EU2YX (FAST RECOVERY)	1	D833	
10-0EU2YX-FBX	DIODE EU2YX (FAST RECOVERY)	1	D834	
10-0RU3AM-FOX	DIODE RU3AM (FAST RECOVERY)	1	D831	
10-HER108-FBX	DIODE HER108	1	D803	
13-UA7805-COS	IC UA7805C	1	IC841	
13-L7809C-VAP	IC L7809CV	1	IC851	
10-00EU1Z-FBX	DIODE EU1Z (FAST RECOVERY)	1	D804	
10-00EU1Z-FBX	DIODE EU1Z (FAST RECOVERY)	1	D805	

Part no	Desc	qty	loc
10-00EU1Z-FBX	DIODE EU1Z (FAST RECOVERY)	1	D806
10-D3SB60-H7X	DIODE D3SB60 (BRIDGE RECT.)	1	DB801
T8-0B166T-VMY	ASS'Y - VM BD	1	
10-1N4148-ABX	DIODE 1N4148 (SWITCHING)	1	D556
10-1N4148-ABX	DIODE 1N4148 (SWITCHING)	1	D557
10-1N4148-ABX	DIODE 1N4148 (SWITCHING)	1	D554
10-1N4148-ABX	DIODE 1N4148 (SWITCHING)	1	D555
10-1N4148-ABX	DIODE 1N4148 (SWITCHING)	1	D552
10-1N4148-ABX	DIODE 1N4148 (SWITCHING)	1	D553
11-SA1015-YBX	TRANSISTOR 2SA1015Y	1	Q551
11-SA1015-YBX	TRANSISTOR 2SA1015Y	1	Q556
11-SA1837-OAX	TRANSISTOR 2SA1837	1	Q560
11-SC1815-YBX	TRANSISTOR 2SC1815Y	1	Q553
11-SC1815-YBX	TRANSISTOR 2SC1815Y	1	Q554
11-SC1815-YBX	TRANSISTOR 2SC1815Y	1	Q555
11-SC1815-YBX	TRANSISTOR 2SC1815Y	1	Q557
11-SC1815-YBX	TRANSISTOR 2SC1815Y	1	Q558
11-SC1815-YBX	TRANSISTOR 2SC1815Y	1	Q559
11-SC4793-OAX	STANSISTOR 2SC4793	1	Q561
11-SK2541-OBX	TRANSISTOR 2SK2541 (N-CHANNEL)	1	Q552
18-CB0103-JNX	RES. C.F. 10K OHM 1/6W +/-5%	1	R552
18-CB0103-JNX	RES. C.F. 10K OHM 1/6W +/-5%	1	R551
18-CB0103-JNX	RES. C.F. 10K OHM 1/6W +/-5%	1	R564
18-CB0122-JNX	RES. C.F. 1.2k OHM 1/6W +/-5%	1	R585
18-CB0122-JNX	RES. C.F. 1.2k OHM 1/6W +/-5%	1	R590
18-CB0122-JNX	RES. C.F. 1.2k OHM 1/6W +/-5%	1	R582
18-CB0123-JNX	RES. C.F. 12k OHM 1/6W +/-5%	1	R563
18-CB0123-JNX	RES. C.F. 12k OHM 1/6W +/-5%	1	R589
18-CB0123-JNX	RES. C.F. 12k OHM 1/6W +/-5%	1	R578
18-CB0123-JNX	RES. C.F. 12k OHM 1/6W +/-5%	1	R574
18-CB0124-JNX	RES. C.F. 120K OHM 1/6W +/-5%	1	R577
18-CB0151-JNX	RES. C.F. 150 OHM 1/6W +/-5%	1	R568
18-CB0152-JNX	RES. C.F. 1.5k OHM 1/6W +/-5%	1	R586
18-CB0152-JNX	RES. C.F. 1.5k OHM 1/6W +/-5%	1	R591
18-CB0181-JNX	RES. C.F. 180 OHM 1/6W +/-5%	1	R556
18-CB0181-JNX	RES. C.F. 180 OHM 1/6W +/-5%	1	R558
18-CB0182-JNX	RES. C.F. 1.8K OHM 1/6W +/-5%	1	R554
18-CB0182-JNX	RES. C.F. 1.8K OHM 1/6W +/-5%	1	R557
18-CB0182-JNX	RES. C.F. 1.8K OHM 1/6W +/-5%	1	R555
18-CB0182-JNX	RES. C.F. 1.8K OHM 1/6W +/-5%	1	R581
18-CB0182-JNX	RES. C.F. 1.8K OHM 1/6W +/-5%	1	R575
18-CB0203-JNX	RES. C.F. 20k OHM 1/6W +/-5%	1	R572
18-CB0221-JNX	RES. C.F. 220 OHM 1/6W +/-5%	1	R583
18-CB0222-JNX	RES. C.F. 2.2k OHM 1/6W +/-5%	1	R553
18-CB0271-JNX	RES. C.F. 270 OHM 1/6W +/-5%	1	R562
18-CB0331-JNX	RES. C.F. 330 OHM 1/6W +/-5%	1	R565
18-CB0331-JNX	RES. C.F. 330 OHM 1/6W +/-5%	1	R576
18-CB0563-JNX	RES. C.F. 56K OHM 1/6W +/-5%	1	R573
18-CB0681-JNX	RES. C.F. 680 OHM 1/6W +/-5%	1	R561
18-CB0681-JNX	RES. C.F. 680 OHM 1/6W +/-5%	1	R566
18-CB0683-JNX	RES. C.F. 68K OHM 1/6W +/-5%	1	R587
18-CB0683-JNX	RES. C.F. 68K OHM 1/6W +/-5%	1	R588
18-CB0821-JNX	RES. C.F. 820 OHM 1/6W +/-5%	1	R567
18-CD0122-JNX	RES. C.F. 1.2K OHM 1/4W +/-5%	1	R571
18-CD0279-JNX	RES. C.F. 2.7 OHM 1/4W +/-5%	1	R593
18-CD0279-JNX	RES. C.F. 2.7 OHM 1/4W +/-5%	1	R594
18-CE0470-JNX	RES. C.F. 47 OHM 1/2W +/-5%	1	R592

Part no	Desc	qty	loc	
18-CE0470-JNX	RES. C.F. 47 OHM 1/2W +/-5%	1	R595	
18-FE0121-JNX	RES. M.O. 120 OHM 1/2W +/-5%	1	R584	
18-FG0221-JHX	RES. M.O. 220 OHM 2W +/-5%	1	R596	
25-BJA330-M1X	CAP. ELEC 33 UF 160V +/-20%	1	C568	
26-AIC472-KBX	CAP. CER 4700 PF 500V +/-10% B	1	C565	
26-AIC472-KBX	CAP. CER 4700 PF 500V +/-10% B	1	C566	
26-AIC560-JZX	CAP. CER 56 PF 500V +/-5% SL	1	C571	
26-EBP680-JZX	CAP. CER 68PF 50V +/-5% SL TUBE	1	C555	
26-EBP680-JZX	CAP. CER 68PF 50V +/-5% SL TUBE	1	C564	
26-EBP680-JZX	CAP. CER 68PF 50V +/-5% SL TUBE	1	C562	
27-AGQ104-JOX	CAP. M.PP 0.1 UF 250V +/-5%	1	C570	
34-A608K6-1BX	COIL CHOKE 0.6 UH +/-10%	1	L554	
34-R101J2-OEX	COIL PL - 100 UH +/-5%	1	L551	
34-R101J2-OEX	COIL PL - 100 UH +/-5%	1	L555	
34-R390J2-OEX	COIL PL - 39 UH +/-5%	1	L553	
41-WJ0075-B00	WIRE BARE JUMPER 7.5MM	1	J701	
43-YBL25E-180	LUMINANCE DELAY LINE YBL25E18	1	T551	
46-32274H-03X	HS 3P24 380 TJC3-3Y/SCN-3Y	1	P504	FOR M.BD P401
46-33079W-03X	PIN BASE *3 TJC3-3A	1	P506	FOR CRT VM
64-B30080-104	M/C SCREW B 3 X 8	2		FOR Q561 & Q560
67-H34464-1A0	HEAT SINK (H=40MM)	2		FOR Q560 & Q561
10-0FR104-FBX	DIODE FR104 (FAST RECTIFIER)	1	D558	
10-0FR104-FBX	DIODE FR104 (FAST RECTIFIER)	1	D559	
25-BCB101-M1X	CAP. ELEC 100 UF 16V +/-20%	1	C567	
25-BCB101-M1X	CAP. ELEC 100 UF 16V +/-20%	1	C569	
25-BDB100-M1X	CAP. ELEC 10 UF 25V +/-20%	1	C551	
25-BDB100-M1X	CAP. ELEC 10 UF 25V +/-20%	1	C563	
25-BDB100-M1X	CAP. ELEC 10 UF 25V +/-20%	1	C558	
25-BDB100-M1X	CAP. ELEC 10 UF 25V +/-20%	1	C561	
25-BDB101-M1X	CAP. ELEC 100 UF 25V +/-20%	1	C557	
25-BDB220-M1X	CAP. ELEC 22 UF 25V +/-20%	1	C553	
25-BDB221-M1X	CAP. ELEC 220 UF 25V +/-20%	1	C552	
25-BFB470-M1X	CAP. ELEC 47 UF 50V +/-20%	1	C556	
40-2980UA-VMC	P.C.B. VM BD	1		
34-A240K0-1IX	COIL CHOKE 24 UH +/-10%	1	L552	
26-EBP104-ZFX	CAP. CER 0.1UF 50V +80%/-20%	1	C559	
46-30780H-04X	HS 4P 2468#24 390 TJC3-4Y/SCN-4Y	1	P505	FOR M.BD P202
63-W26080-BF4	S/T SCREW W 2.6 X 8 BF	2		MTG VM BD TO CRT
T8-0B166T-FCY	ASS'Y - FRONT CABINET	1		
02-GND029-XX0	ASS'Y-CRT GND WIRE & HOUS. (29)	1		
18-CD0106-JNX	RES. C.F. 10M OHM 1/4W +/-5%	1	R1	
36-DEG290-XX1	DEGAUSSING COIL 3100MM	1		
41-BF0450-0BB	WIRE UL1007#24 450 BLACK	1	FOR R1	
42-61208F-XX0	SPEAKER 8 OHM 8W	1	SP601	
42-61208F-XX0	SPEAKER 8 OHM 8W	1	SP602	
44-29RFLS-OR3A	CRT A68QDL082X012(B) (AUST)	1	CRT01	
46-35102H-03X	HS 2P 2468#22 200/5 TJC3-3Y	1		FOR VM BD P506
54-113971-OUE	PVC TUBE #6 L=160MM	0.32		FOR SPK HOUSING
54-205140-000	SPACER CRT MOUNTING T=2MM	4		MTG CRT & FRONT CABINET
54-237930-0X0	HEAT SHRINKABLE TUBE 5*0.25	0.03	FOR R1	
54-314740-0X0	CRT FIBRE SHEET (22mmX22mmX0.8mm)	4		MTG CRT & FRONT CABINET
55-B166FC-0AN	FRONT CABINET	1		
56-377890-OHA	FRONT PANEL II	1		
56-B166FB-OHA	PUSH BUTTON	1		
56-B166LS-OHC	LENS	1		
56-B166PK-OHA	POWER KNOB	1		
59-130460-00X	RUBBER PAD (25mmX7mm)	2		FOR FRONT CABINET FOOTING

Part no	Desc	qty	loc	
59-312160-000	SPEAKER RUBBER CUSHION	8		FOR SPEAKER
59-377680-000	RUBBER PAD (22X22X5mm)	2		STICK ON CRT SUPPORT
62-10654X-00F	UNI-TIE (2.5mmX95mm)	13		
62-265160-OHA	POWER SW. ADAPTOR	1		
63-B30080-BT4	S/T SCREW B 3 X 8 BT	3		MTG PUSH BUTTON & KEY BD
63-B30080-BT4	S/T SCREW B 3 X 8 BT	1		MTG REIEIVE BD & PANEL
63-B30100-AB4	S/T SCREW B 3 X 10 AB	10		MTG PANEL & FRONT CAB.
63-H60300-BT4	S/T SCREW H 6 X 30 BT	4		MTG CRT
63-W30100-AB4	S/T SCREW W 3 X 10 AB	2		MTG SWITCH BD
63-W30100-AB4	S/T SCREW W 3 X 10 AB	2		MTG PUSH BUTTON & FRONT CAB.
63-W30140-HS4	S/T SCREW W 3 X 14 HS	8		MTG SPEAKER
65-A75200-20E	WASHER 7.5mmX20mmX2mm MTG CRT	4		MTG CRT
67-105580-0E2	SOLDERING TAG	1		CONNECT WIHT PUSH BUTTON
62-357060-0UN	SUPPORT POST	2		
63-B40150-AB3	S/T SCREW B 4 X 15 AB (BLACK)	4		
25-DFB478-M1X	CAP. ELEC 0.47 UF 50V +/-20%NP	1	C1	
25-DFB478-M1X	CAP. ELEC 0.47 UF 50V +/-20%NP	1	C2	
63-W30100-AB4	S/T SCREW W 3 X 10 AB	4		MTG HI-SPK & FRONT CAB
42-G3508D-XX0	SPEAKER 8 OHM 5W	1	SP601A	
42-G3508D-XX0	SPEAKER 8 OHM 5W	1	SP602A	
67-X21679-0E0	SPRING CRT 6mmX50mmX0.6mm	2		
67-X24283-0E0	SPING POWER KNOB	1		
T8-0B166T-CFN	ASS'Y - COMB FILTER BD	1		
11-SK2541-OBX	TRANSISTOR 2SK2541 (N-CHANNEL)	1	Q1111	
11-SK2541-OBX	TRANSISTOR 2SK2541 (N-CHANNEL)	1	Q1112	
13-0TDA91-81P	IC TDA9181 (COMB FILTER)	1	IC1101	
18-CB0103-JNX	RES. C.F. 10K OHM 1/6W +/-5%	1	R1112	
18-CB0472-JNX	RES. C.F. 4.7k OHM 1/6W +/-5%	1	R1111	
18-CB0472-JNX	RES. C.F. 4.7k OHM 1/6W +/-5%	1	R1115	
18-CB0512-JNX	RES. C.F. 5.1k OHM 1/6W +/-5%	1	R1113	
18-CB0820-JNX	RES. C.F. 82 OHM 1/6W +/-5%	1	R1116	
26-EBP102-KBX	CAP. CER 1000 PF 50V +/-10% B	1	C1123	
26-EBP103-ZFX	CAP. CER 0.01UF 50V +80/-20% F	1	C1114	
26-EBP103-ZFX	CAP. CER 0.01UF 50V +80/-20% F	1	C1116	
26-EBP103-ZFX	CAP. CER 0.01UF 50V +80/-20% F	1	C1117	
26-EBP103-ZFX	CAP. CER 0.01UF 50V +80/-20% F	1	C1118	
26-EBP103-ZFX	CAP. CER 0.01UF 50V +80/-20% F	1	C1119	
26-EBP104-ZFX	CAP. CER 0.1UF 50V +80%/-20%	1	C1112	
26-EBP150-JZX	CAP. CER 15PF 50V +/-5% SL TUBU	1	C1120	
26-EBP150-JZX	CAP. CER 15PF 50V +/-5% SL TUBU	1	C1122	
26-EBP222-KBX	CAP. CER 2200PF 50V +/-10% B	1	C1111	
34-R100J2-OEX	COIL PL - 10 UH +/-5%	1	L1111	
34-R100J2-OEX	COIL PL - 10 UH +/-5%	1	L1112	
40-2900NT-CSB	P.C.B. COMB FILTER & SECAM BD	1		
41-WJ0060-B00	WIRE BARE JUMPER 6mm	1	J1121	
41-WJ0065-B00	WIRE BARE JUMPER 6.5MM	1	J1111	
41-WJ0070-B00	WIRE BARE JUMPER 7MM	1	J1117	
41-WJ0090-B00	WIRE BARE JUMPER 9MM	1	J1118	
41-WJ0090-B00	WIRE BARE JUMPER 9MM	1	J1115	
41-WJ0100-B00	WIRE BARE JUMPER 10MM	1	J1120	
46-21550W-14X	HEADER *14 TS14B-SQ-1	1	P1111	FOR M. BD P230
67-257870-1T0	BRACKET IF BD	1		
67-257870-2T0	BRACKET IF BD	1		
25-BCB470-M1X	CAP. ELEC 47 UF 16V +/-20%	1	C1113	
25-BCB470-M1X	CAP. ELEC 47 UF 16V +/-20%	1	C1115	
25-BFB479-M1X	CAP. ELEC 4.7 UF 50V +/-20%	1	C1121	
T8-HS46F0-M13C	ASS'Y - REMOTE HANDSET	1		

Part no	Desc	qty	loc
10-1N4148-ABX	DIODE 1N4148 (SWITCHING)	1	D1502
10-1N4148-ABX	DIODE 1N4148 (SWITCHING)	1	D1503
10-1N4148-ABX	DIODE 1N4148 (SWITCHING)	1	D1504
10-1N4148-ABX	DIODE 1N4148 (SWITCHING)	1	D1505
10-1N4148-ABX	DIODE 1N4148 (SWITCHING)	1	D1507
11-0BC337-OBX	TRANSISTOR (NPN) BC337-40	1	Q1501
14-IRE05B-XX0	IR EMITTING DIODE TSAL6200	1	D1501
18-CB0229-JNX	RES. C.F. 2.2 OHM 1/6W +/-5%	1	R1502
18-CB0682-JNX	RES. C.F. 6.8K OHM 1/6W +/-5%	1	R1501
26-EBP101-JCX	CAP. CER 100PF 50V +/-5% CH	1	C1501
26-EBP101-JCX	CAP. CER 100PF 50V +/-5% CH	1	C1502
40-2909NT-RMB	P. C. B. REMOTE HANDSET BD	1	
45-COS455-KY0	CERAMIC RESONATOR 455KHZ	1	X1501
49-HS46F0-00X	RUBBER PAD KEYS	1	
55-HS46FB-OHA	CASE LOWER - REMOTE HANDSET	1	
55-HS46FD-OHA	DOOR BATT. - REMOTE HANDSET	1	
55-HS46FT-OHA	CASE UPPER - REMOTE HANDSET	1	
58-HS46F2-MUI	INLAY REMOTE HANDSET	1	
63-B26060-BT2	S/T SCREW B 2.6 X 6 BT	1	
74-009022-60C	POLYBAG HANDSET (9CMX22CM)	1	
25-HBB470-M1X	CAP. ELEC 47UF 10V +/-20%	1	C1503
13-SC9028-23B	IC SC9028-023	1	IC1501
67-X26968-OE2	BATT. TERMINAL (+/-)	1	
67-X31028-OE2	SPRING - BATTERY (-)	1	
67-X31029-OE2	SPRING - BATTERY (+)	1	
T8-OB166T-MAN	ASS'Y - MAIN BD	1	
07-389VI5-NX4	TUNER UV1355-BK2(BG/HB/IEC/5V	1	TU101
10-0BY228-FOX	DIODE BY228	1	D411
10-1N4001-EBX	DIODE 1N4001 (RECTIFIER)	1	D301
10-1N4148-ABX	DIODE 1N4148 (SWITCHING)	1	D041
10-1N4148-ABX	DIODE 1N4148 (SWITCHING)	1	D042
10-1N4148-ABX	DIODE 1N4148 (SWITCHING)	1	D043
10-1N4148-ABX	DIODE 1N4148 (SWITCHING)	1	D044
10-1N4148-ABX	DIODE 1N4148 (SWITCHING)	1	D211
10-1N4148-ABX	DIODE 1N4148 (SWITCHING)	1	D212
10-1N4148-ABX	DIODE 1N4148 (SWITCHING)	1	D213
10-1N4148-ABX	DIODE 1N4148 (SWITCHING)	1	D221
10-1N4148-ABX	DIODE 1N4148 (SWITCHING)	1	D223
10-1N4148-ABX	DIODE 1N4148 (SWITCHING)	1	D280
10-1N4148-ABX	DIODE 1N4148 (SWITCHING)	1	D632
10-1N4148-ABX	DIODE 1N4148 (SWITCHING)	1	D711
10-1N4148-ABX	DIODE 1N4148 (SWITCHING)	1	D721
10-79C12V-DBX	DIODE ZENER 12V 1/2W 5%	1	D731
10-79C12V-DBX	DIODE ZENER 12V 1/2W 5%	1	D732
10-79C4V7-DBX	DIODE ZENER 4V7 1/2W 5%	1	D222
10-79C5V1-DBX	DIODE ZENER 5V1 1/2W 5%	1	D061
10-79C5V1-DBX	DIODE ZENER 5V1 1/2W 5%	1	D101
10-79C8V2-DBX	DIODE ZENER 8V2 1/2W 5%	1	D471
10-79C8V2-DBX	DIODE ZENER 8V2 1/2W 5%	1	D240
10-0FR104-FBX	DIODE FR104 (FAST RECTIFIER)	1	D412
10-0FR104-FBX	DIODE FR104 (FAST RECTIFIER)	1	D421
10-0FR104-FBX	DIODE FR104 (FAST RECTIFIER)	1	D431
10-0FR104-FBX	DIODE FR104 (FAST RECTIFIER)	1	D441
11-0BC337-OBX	TRANSISTOR (NPN) BC337-40	1	Q062
11-2N3904-OBX	TRANSISTOR 2N3904 (NPN)	1	Q091
11-DD2553-0AX	TRANSISTOR (HORIZ) 3DD2553	1	Q412
11-SA1015-YBX	TRANSISTOR 2SA1015Y	1	Q061

Part no	Desc	qty	loc
11-SA1015-YBX	TRANSISTOR 2SA1015Y	1	Q211
11-SA1015-YBX	TRANSISTOR 2SA1015Y	1	Q633
11-SA1015-YBX	TRANSISTOR 2SA1015Y	1	Q721
11-SA1015-YBX	TRANSISTOR 2SA1015Y	1	Q934
11-SA1015-YBX	TRANSISTOR 2SA1015Y	1	Q242
11-SC1815-YBX	TRANSISTOR 2SC1815Y	1	Q001
11-SC1815-YBX	TRANSISTOR 2SC1815Y	1	Q002
11-SC1815-YBX	TRANSISTOR 2SC1815Y	1	Q031
11-SC1815-YBX	TRANSISTOR 2SC1815Y	1	Q051
11-SC1815-YBX	TRANSISTOR 2SC1815Y	1	Q251
11-SC1815-YBX	TRANSISTOR 2SC1815Y	1	Q252
11-SC1815-YBX	TRANSISTOR 2SC1815Y	1	Q261
11-SC1815-YBX	TRANSISTOR 2SC1815Y	1	Q451
11-SC1815-YBX	TRANSISTOR 2SC1815Y	1	Q631
11-SC1815-YBX	TRANSISTOR 2SC1815Y	1	Q711
11-SC1815-YBX	TRANSISTOR 2SC1815Y	1	Q911
11-SC1815-YBX	TRANSISTOR 2SC1815Y	1	Q912
11-SC1815-YBX	TRANSISTOR 2SC1815Y	1	Q913
11-SC1815-YBX	TRANSISTOR 2SC1815Y	1	Q921
11-SC1815-YBX	TRANSISTOR 2SC1815Y	1	Q922
11-SC1815-YBX	TRANSISTOR 2SC1815Y	1	Q923
11-SC1815-YBX	TRANSISTOR 2SC1815Y	1	Q931
11-SC1815-YBX	TRANSISTOR 2SC1815Y	1	Q932
11-SC1815-YBX	TRANSISTOR 2SC1815Y	1	Q933
11-SC1815-YBX	TRANSISTOR 2SC1815Y	1	Q963
11-SC1815-YBX	TRANSISTOR 2SC1815Y	1	Q964
11-SC1815-YBX	TRANSISTOR 2SC1815Y	1	Q971
11-SC1815-YBX	TRANSISTOR 2SC1815Y	1	Q981
11-SC1815-YBX	TRANSISTOR 2SC1815Y	1	Q991
11-SC3779-DBX	TRANSISTOR 2SC3779D (RF AMPL)	1	Q121
11-SC4544-OAX	TRANSISTOR 2SC4544	1	Q401
11-SD1499-QAX	TRANSISTOR 2SD1499-Q	1	Q722
11-SK2541-OBX	TRANSISTOR 2SK2541 (N-CHANNEL)	1	Q052
13-000040-52P	IC 4052	1	IC961
13-000040-52P	IC 4052	1	IC962
13-00M24C-08P	IC EEPROM 8K M24C08	1	IC002
13-0TA842-7KS	IC TA8427K	1	IC301
13-0TDA26-16S	IC TDA2616 (AUDIO O/P)	1	IC601
13-A18V01-TOP	IC TCL-A18V01-T0	1	IC001
13-TB1240-ANP	IC TB1240AN	1	IC201
18-CB0101-JNX	RES. C.F. 100 OHM 1/6W +/-5%	1	R003
18-CB0101-JNX	RES. C.F. 100 OHM 1/6W +/-5%	1	R006
18-CB0101-JNX	RES. C.F. 100 OHM 1/6W +/-5%	1	R007
18-CB0101-JNX	RES. C.F. 100 OHM 1/6W +/-5%	1	R008
18-CB0101-JNX	RES. C.F. 100 OHM 1/6W +/-5%	1	R015
18-CB0101-JNX	RES. C.F. 100 OHM 1/6W +/-5%	1	R016
18-CB0101-JNX	RES. C.F. 100 OHM 1/6W +/-5%	1	R038
18-CB0101-JNX	RES. C.F. 100 OHM 1/6W +/-5%	1	R065
18-CB0101-JNX	RES. C.F. 100 OHM 1/6W +/-5%	1	R073
18-CB0101-JNX	RES. C.F. 100 OHM 1/6W +/-5%	1	R075
18-CB0101-JNX	RES. C.F. 100 OHM 1/6W +/-5%	1	R253
18-CB0102-JNX	RES. C.F. 1K OHM 1/6W +/-5%	1	R062
18-CB0102-JNX	RES. C.F. 1K OHM 1/6W +/-5%	1	R067
18-CB0102-JNX	RES. C.F. 1K OHM 1/6W +/-5%	1	R071
18-CB0102-JNX	RES. C.F. 1K OHM 1/6W +/-5%	1	R091
18-CB0102-JNX	RES. C.F. 1K OHM 1/6W +/-5%	1	R124
18-CB0102-JNX	RES. C.F. 1K OHM 1/6W +/-5%	1	R220

Part no	Desc	qty	loc
18-CB0102-JNX	RES. C.F. 1K OHM 1/6W +/-5%	1	R269
18-CB0102-JNX	RES. C.F. 1K OHM 1/6W +/-5%	1	R271
18-CB0102-JNX	RES. C.F. 1K OHM 1/6W +/-5%	1	R301
18-CB0102-JNX	RES. C.F. 1K OHM 1/6W +/-5%	1	R304
18-CB0102-JNX	RES. C.F. 1K OHM 1/6W +/-5%	1	R451
18-CB0102-JNX	RES. C.F. 1K OHM 1/6W +/-5%	1	R911
18-CB0102-JNX	RES. C.F. 1K OHM 1/6W +/-5%	1	R912
18-CB0102-JNX	RES. C.F. 1K OHM 1/6W +/-5%	1	R921
18-CB0102-JNX	RES. C.F. 1K OHM 1/6W +/-5%	1	R922
18-CB0102-JNX	RES. C.F. 1K OHM 1/6W +/-5%	1	R936
18-CB0102-JNX	RES. C.F. 1K OHM 1/6W +/-5%	1	R938
18-CB0102-JNX	RES. C.F. 1K OHM 1/6W +/-5%	1	R939
18-CB0102-JNX	RES. C.F. 1K OHM 1/6W +/-5%	1	R945
18-CB0102-JNX	RES. C.F. 1K OHM 1/6W +/-5%	1	R946
18-CB0102-JNX	RES. C.F. 1K OHM 1/6W +/-5%	1	R947
18-CB0102-JNX	RES. C.F. 1K OHM 1/6W +/-5%	1	R948
18-CB0102-JNX	RES. C.F. 1K OHM 1/6W +/-5%	1	R966
18-CB0102-JNX	RES. C.F. 1K OHM 1/6W +/-5%	1	R968
18-CB0103-JNX	RES. C.F. 10K OHM 1/6W +/-5%	1	R005
18-CB0103-JNX	RES. C.F. 10K OHM 1/6W +/-5%	1	R012A
18-CB0103-JNX	RES. C.F. 10K OHM 1/6W +/-5%	1	R017
18-CB0103-JNX	RES. C.F. 10K OHM 1/6W +/-5%	1	R029
18-CB0103-JNX	RES. C.F. 10K OHM 1/6W +/-5%	1	R031
18-CB0103-JNX	RES. C.F. 10K OHM 1/6W +/-5%	1	R040
18-CB0103-JNX	RES. C.F. 10K OHM 1/6W +/-5%	1	R051
18-CB0103-JNX	RES. C.F. 10K OHM 1/6W +/-5%	1	R054
18-CB0103-JNX	RES. C.F. 10K OHM 1/6W +/-5%	1	R055
18-CB0103-JNX	RES. C.F. 10K OHM 1/6W +/-5%	1	R061
18-CB0103-JNX	RES. C.F. 10K OHM 1/6W +/-5%	1	R101
18-CB0103-JNX	RES. C.F. 10K OHM 1/6W +/-5%	1	R102
18-CB0103-JNX	RES. C.F. 10K OHM 1/6W +/-5%	1	R225
18-CB0103-JNX	RES. C.F. 10K OHM 1/6W +/-5%	1	R237
18-CB0103-JNX	RES. C.F. 10K OHM 1/6W +/-5%	1	R633
18-CB0103-JNX	RES. C.F. 10K OHM 1/6W +/-5%	1	R716
18-CB0103-JNX	RES. C.F. 10K OHM 1/6W +/-5%	1	R722
18-CB0103-JNX	RES. C.F. 10K OHM 1/6W +/-5%	1	R757
18-CB0103-JNX	RES. C.F. 10K OHM 1/6W +/-5%	1	R960
18-CB0103-JNX	RES. C.F. 10K OHM 1/6W +/-5%	1	R961
18-CB0103-JNX	RES. C.F. 10K OHM 1/6W +/-5%	1	R962
18-CB0103-JNX	RES. C.F. 10K OHM 1/6W +/-5%	1	R989
18-CB0104-JNX	RES. C.F. 100K OHM 1/6W +/-5%	1	R053
18-CB0104-JNX	RES. C.F. 100K OHM 1/6W +/-5%	1	R206
18-CB0104-JNX	RES. C.F. 100K OHM 1/6W +/-5%	1	R917
18-CB0104-JNX	RES. C.F. 100K OHM 1/6W +/-5%	1	R918
18-CB0104-JNX	RES. C.F. 100K OHM 1/6W +/-5%	1	R919
18-CB0104-JNX	RES. C.F. 100K OHM 1/6W +/-5%	1	R926
18-CB0104-JNX	RES. C.F. 100K OHM 1/6W +/-5%	1	R927
18-CB0104-JNX	RES. C.F. 100K OHM 1/6W +/-5%	1	R928
18-CB0104-JNX	RES. C.F. 100K OHM 1/6W +/-5%	1	R929
18-CB0104-JNX	RES. C.F. 100K OHM 1/6W +/-5%	1	R973
18-CB0104-JNX	RES. C.F. 100K OHM 1/6W +/-5%	1	R983
18-CB0104-JNX	RES. C.F. 100K OHM 1/6W +/-5%	1	R056
18-CB0104-JNX	RES. C.F. 100K OHM 1/6W +/-5%	1	R205
18-CB0106-JNX	RES. C.F. 10M OHM 1/6W +/-5%	1	R116
18-CB0123-JNX	RES. C.F. 12k OHM 1/6W +/-5%	1	R244
18-CB0123-JNX	RES. C.F. 12k OHM 1/6W +/-5%	1	R951
18-CB0124-JNX	RES. C.F. 120K OHM 1/6W +/-5%	1	R287

Part no	Desc	qty	loc
18-CB0133-JNX	RES. C. F. 13k OHM 1/6W +/-5%	1	R452
18-CB0151-JNX	RES. C. F. 150 OHM 1/6W +/-5%	1	R127
18-CB0151-JNX	RES. C. F. 150 OHM 1/6W +/-5%	1	R934
18-CB0151-JNX	RES. C. F. 150 OHM 1/6W +/-5%	1	R935
18-CB0151-JNX	RES. C. F. 150 OHM 1/6W +/-5%	1	R994
18-CB0152-JNX	RES. C. F. 1.5k OHM 1/6W +/-5%	1	R204
18-CB0152-JNX	RES. C. F. 1.5k OHM 1/6W +/-5%	1	R212
18-CB0152-JNX	RES. C. F. 1.5k OHM 1/6W +/-5%	1	R213
18-CB0152-JNX	RES. C. F. 1.5k OHM 1/6W +/-5%	1	R214
18-CB0152-JNX	RES. C. F. 1.5k OHM 1/6W +/-5%	1	R063
18-CB0153-JNX	RES. C. F. 15k OHM 1/6W +/-5%	1	R057
18-CB0153-JNX	RES. C. F. 15k OHM 1/6W +/-5%	1	R072
18-CB0153-JNX	RES. C. F. 15k OHM 1/6W +/-5%	1	R112
18-CB0153-JNX	RES. C. F. 15k OHM 1/6W +/-5%	1	R113
18-CB0153-JNX	RES. C. F. 15k OHM 1/6W +/-5%	1	R288
18-CB0153-JNX	RES. C. F. 15k OHM 1/6W +/-5%	1	R987
18-CB0153-JNX	RES. C. F. 15k OHM 1/6W +/-5%	1	R632A
18-CB0181-JNX	RES. C. F. 180 OHM 1/6W +/-5%	1	R123
18-CB0182-JNX	RES. C. F. 1.8K OHM 1/6W +/-5%	1	R715
18-CB0201-JNX	RES. C. F. 200 OHM 1/6W +/-5%	1	R993
18-CB0221-JNX	RES. C. F. 220 OHM 1/6W +/-5%	1	R203
18-CB0221-JNX	RES. C. F. 220 OHM 1/6W +/-5%	1	R215
18-CB0221-JNX	RES. C. F. 220 OHM 1/6W +/-5%	1	R216
18-CB0221-JNX	RES. C. F. 220 OHM 1/6W +/-5%	1	R217
18-CB0221-JNX	RES. C. F. 220 OHM 1/6W +/-5%	1	R255
18-CB0221-JNX	RES. C. F. 220 OHM 1/6W +/-5%	1	R261
18-CB0221-JNX	RES. C. F. 220 OHM 1/6W +/-5%	1	R401
18-CB0221-JNX	RES. C. F. 220 OHM 1/6W +/-5%	1	R012
18-CB0222-JNX	RES. C. F. 2.2k OHM 1/6W +/-5%	1	D215
18-CB0222-JNX	RES. C. F. 2.2k OHM 1/6W +/-5%	1	D631
18-CB0222-JNX	RES. C. F. 2.2k OHM 1/6W +/-5%	1	R041
18-CB0222-JNX	RES. C. F. 2.2k OHM 1/6W +/-5%	1	R042
18-CB0222-JNX	RES. C. F. 2.2k OHM 1/6W +/-5%	1	R043
18-CB0222-JNX	RES. C. F. 2.2k OHM 1/6W +/-5%	1	R044
18-CB0222-JNX	RES. C. F. 2.2k OHM 1/6W +/-5%	1	R242
18-CB0222-JNX	RES. C. F. 2.2k OHM 1/6W +/-5%	1	R713
18-CB0222-JNX	RES. C. F. 2.2k OHM 1/6W +/-5%	1	R914
18-CB0222-JNX	RES. C. F. 2.2k OHM 1/6W +/-5%	1	R924
18-CB0222-JNX	RES. C. F. 2.2k OHM 1/6W +/-5%	1	R972
18-CB0222-JNX	RES. C. F. 2.2k OHM 1/6W +/-5%	1	R982
18-CB0222-JNX	RES. C. F. 2.2k OHM 1/6W +/-5%	1	R988
18-CB0222-JNX	RES. C. F. 2.2k OHM 1/6W +/-5%	1	R991
18-CB0222-JNX	RES. C. F. 2.2k OHM 1/6W +/-5%	1	R953
18-CB0222-JNX	RES. C. F. 2.2k OHM 1/6W +/-5%	1	R954
18-CB0223-JNX	RES. C. F. 22k OHM 1/6W +/-5%	1	R092
18-CB0223-JNX	RES. C. F. 22k OHM 1/6W +/-5%	1	R631
18-CB0223-JNX	RES. C. F. 22k OHM 1/6W +/-5%	1	R915
18-CB0223-JNX	RES. C. F. 22k OHM 1/6W +/-5%	1	R916
18-CB0223-JNX	RES. C. F. 22k OHM 1/6W +/-5%	1	R920
18-CB0223-JNX	RES. C. F. 22k OHM 1/6W +/-5%	1	R925
18-CB0223-JNX	RES. C. F. 22k OHM 1/6W +/-5%	1	R952
18-CB0224-JNX	RES. C. F. 220k OHM 1/6W +/-5%	1	R251
18-CB0271-JNX	RES. C. F. 270 OHM 1/6W +/-5%	1	R711
18-CB0272-JNX	RES. C. F. 2.7k OHM 1/6W +/-5%	1	R227
18-CB0302-JNX	RES. C. F. 3K OHM 1/6W +/-5%	1	R601
18-CB0302-JNX	RES. C. F. 3K OHM 1/6W +/-5%	1	R602
18-CB0331-JNX	RES. C. F. 330 OHM 1/6W +/-5%	1	R222

Part no	Desc	qty	loc
18-CB0331-JNX	RES. C. F. 330 OHM 1/6W +/-5%	1	R223
18-CB0331-JNX	RES. C. F. 330 OHM 1/6W +/-5%	1	R229
18-CB0331-JNX	RES. C. F. 330 OHM 1/6W +/-5%	1	R259
18-CB0332-JNX	RES. C. F. 3.3k OHM 1/6W +/-5%	1	R013
18-CB0332-JNX	RES. C. F. 3.3k OHM 1/6W +/-5%	1	R014
18-CB0332-JNX	RES. C. F. 3.3k OHM 1/6W +/-5%	1	R074
18-CB0332-JNX	RES. C. F. 3.3k OHM 1/6W +/-5%	1	R076
18-CB0332-JNX	RES. C. F. 3.3k OHM 1/6W +/-5%	1	R111
18-CB0332-JNX	RES. C. F. 3.3k OHM 1/6W +/-5%	1	R254
18-CB0332-JNX	RES. C. F. 3.3k OHM 1/6W +/-5%	1	R302
18-CB0332-JNX	RES. C. F. 3.3k OHM 1/6W +/-5%	1	R472
18-CB0333-JNX	RES. C. F. 33K OHM 1/6W +/-5%	1	R114
18-CB0333-JNX	RES. C. F. 33K OHM 1/6W +/-5%	1	R208
18-CB0333-JNX	RES. C. F. 33K OHM 1/6W +/-5%	1	R289
18-CB0333-JNX	RES. C. F. 33K OHM 1/6W +/-5%	1	R714
18-CB0393-JNX	RES. C. F. 39K OHM 1/6W +/-5%	1	R314
18-CB0470-JNX	RES. C. F. 47 OHM 1/6W +/-5%	1	R021
18-CB0470-JNX	RES. C. F. 47 OHM 1/6W +/-5%	1	R077
18-CB0470-JNX	RES. C. F. 47 OHM 1/6W +/-5%	1	R084
18-CB0470-JNX	RES. C. F. 47 OHM 1/6W +/-5%	1	R085
18-CB0470-JNX	RES. C. F. 47 OHM 1/6W +/-5%	1	R940
18-CB0471-JNX	RES. C. F. 470 OHM 1/6W +/-5%	1	R125
18-CB0471-JNX	RES. C. F. 470 OHM 1/6W +/-5%	1	R252
18-CB0471-JNX	RES. C. F. 470 OHM 1/6W +/-5%	1	R931
18-CB0471-JNX	RES. C. F. 470 OHM 1/6W +/-5%	1	R932
18-CB0472-JNX	RES. C. F. 4.7k OHM 1/6W +/-5%	1	R066
18-CB0472-JNX	RES. C. F. 4.7k OHM 1/6W +/-5%	1	R211
18-CB0472-JNX	RES. C. F. 4.7k OHM 1/6W +/-5%	1	R965
18-CB0472-JNX	RES. C. F. 4.7k OHM 1/6W +/-5%	1	R967
18-CB0473-JNX	RES. C. F. 47K OHM 1/6W +/-5%	1	R052
18-CB0473-JNX	RES. C. F. 47K OHM 1/6W +/-5%	1	R115
18-CB0473-JNX	RES. C. F. 47K OHM 1/6W +/-5%	1	R262
18-CB0473-JNX	RES. C. F. 47K OHM 1/6W +/-5%	1	R263
18-CB0473-JNX	RES. C. F. 47K OHM 1/6W +/-5%	1	R284
18-CB0560-JNX	RES. C. F. 56 OHM 1/6W +/-5%	1	R122
18-CB0561-JNX	RES. C. F. 560 OHM 1/6W +/-5%	1	R228
18-CB0622-JNX	RES. C. F. 6.2k OHM 1/6W +/-5%	1	R231
18-CB0750-JNX	RES. C. F. 75 OHM 1/6W +/-5%	1	R933
18-CB0752-JNX	RES. C. F. 7.5K OHM 1/6W +/-5%	1	R221
18-CB0820-JNX	RES. C. F. 82 OHM 1/6W +/-5%	1	R913
18-CB0820-JNX	RES. C. F. 82 OHM 1/6W +/-5%	1	R923
18-CB0820-JNX	RES. C. F. 82 OHM 1/6W +/-5%	1	R971
18-CB0820-JNX	RES. C. F. 82 OHM 1/6W +/-5%	1	R981
18-CB0822-JNX	RES. C. F. 8.2K OHM 1/6W +/-5%	1	R286
18-CB0822-JNX	RES. C. F. 8.2K OHM 1/6W +/-5%	1	R232
18-CD0100-JNX	RES. C. F. 10 OHM 1/4W +/-5%	1	R064
18-CD0101-JNX	RES. C. F. 100 OHM 1/4W +/-5%	1	R226
18-CD0182-JNX	RES. C. F. 1.8K OHM 1/4W +/-5%	1	R313
18-CD0222-JNX	RES. C. F. 2.2K OHM 1/4W +/-5%	1	R723
18-CD0272-JNX	RES. C. F. 2.7K OHM 1/4W +/-5%	1	J691
18-CD0392-JNX	RES. C. F. 3.9K OHM 1/4W +/-5%	1	R725
18-CD0392-JNX	RES. C. F. 3.9K OHM 1/4W +/-5%	1	R312
18-CD0681-JNX	RES. C. F. 680 OHM 1/4W +/-5%	1	R724
18-CD0829-JNX	RES. C. F. 8.2 OHM 1/4W +/-5%	1	R607
18-CD0829-JNX	RES. C. F. 8.2 OHM 1/4W +/-5%	1	R608
18-CE0121-JNX	RES. C. F. 120 OHM 1/2W +/-5%	1	R731
18-CE0229-JNX	RES. C. F. 2.2 OHM 1/2W +/-5%	1	R305

Part no	Desc	qty	loc	
18-CE0470-JNX	RES. C.F. 47 OHM 1/2W +/-5%	1	R103	
18-EG0109-JHX	RES. FUS. 1 OHM 2W +/-5%	1	R431	
18-EG0689-JHX	RES. FUSE 6.8 OHM 2W +/-5%	1	R461	
18-FE0121-JNX	RES. M.O. 120 OHM 1/2W +/-5%	1	R306	
18-FE0472-JNX	RES. M.O. 4.7K OHM 1/2W +/-5%	1	R471	
18-FF0103-JGX	RES. M.O. 10k OHM 1W +/-5%	1	R421	
18-FF0221-JGX	RES. M.O. 220 OHM 1W +/-5%	1	R307	
18-FF0242-JGX	RES. M.O. 2.4K OHM 1W +/-5%	1	R402	
18-FF0681-JGX	RES. M.O. 680 OHM 1W +/-5%	1	R411	
18-FG0100-JHX	RES. M.O. 10 OHM 2W +/-5%	1	J211	
18-FG0399-JHX	RES. M.O. 3.9 OHM 2W +/-5%	1	R726	
18-FG0479-JHX	RES. M.O. 4.7 OHM 2W +/-5%	1	R303	
18-GF0109-JGX	RES WIRE ROUND 1 OHM 1W +/-5%	1	R311	
18-GG0109-JHX	RES WIRE ROUND 1 OHM 2W +/-5%	1	R422	
18-GM0302-KTX	RES. CEMENT 3K OHM 7W +/-10%	1	R404	
25-264610-M1X	CAP. ELEC 4.7UF 50V +/-20% NP	1	C417	
25-BKA100-M1X	CAP. ELEC 10 UF 200V +/-20%	1	C421	
25-BKG101-M1X	CAP. ELEC 100 UF 200V +/-20%	1	C422	
25-BLA100-M1X	CAP. ELEC 10 UF 250V +/-20%	1	C442	
25-GFB109-K1X	CAP. ELEC 1UF 50V +/-10%	1	C223	
26-ABC104-ZFX	CAP. CER 0.1 UF 50V +80/-20% F	1		FOR R038 (R040) TO R036 (GND)
26-AIC221-KBX	CAP. CER 220 PF 500V +/-10% B	1	C431	
26-AIC221-KBX	CAP. CER 220 PF 500V +/-10% B	1	C441	
26-AIC332-KBX	CAP. CER 3300 PF 500V +/-10% B	1	C402	
26-AIC391-KBX	CAP. CER 390 PF 500V +/-10% B	1	C403	
26-AIM103-KBX	CAP. CER 0.01UF 500V +/-10% B	1	C401	
26-EBP101-JCX	CAP. CER 100PF 50V +/-5% CH	1	C032	
26-EBP101-JCX	CAP. CER 100PF 50V +/-5% CH	1	C071	
26-EBP101-JCX	CAP. CER 100PF 50V +/-5% CH	1	C254	
26-EBP101-JCX	CAP. CER 100PF 50V +/-5% CH	1	C255	
26-EBP101-JCX	CAP. CER 100PF 50V +/-5% CH	1	C272	
26-EBP102-KBX	CAP. CER 1000 PF 50V +/-10% B	1	C001	
26-EBP102-KBX	CAP. CER 1000 PF 50V +/-10% B	1	C002	
26-EBP102-KBX	CAP. CER 1000 PF 50V +/-10% B	1	C013	
26-EBP102-KBX	CAP. CER 1000 PF 50V +/-10% B	1	C061	
26-EBP102-KBX	CAP. CER 1000 PF 50V +/-10% B	1	C062	
26-EBP102-KBX	CAP. CER 1000 PF 50V +/-10% B	1	C127	
26-EBP102-KBX	CAP. CER 1000 PF 50V +/-10% B	1	C224	
26-EBP102-KBX	CAP. CER 1000 PF 50V +/-10% B	1	C305	
26-EBP102-KBX	CAP. CER 1000 PF 50V +/-10% B	1	C312	
26-EBP102-KBX	CAP. CER 1000 PF 50V +/-10% B	1	C411	
26-EBP102-KBX	CAP. CER 1000 PF 50V +/-10% B	1	C602	
26-EBP102-KBX	CAP. CER 1000 PF 50V +/-10% B	1	C606	
26-EBP102-KBX	CAP. CER 1000 PF 50V +/-10% B	1	C942	
26-EBP102-KBX	CAP. CER 1000 PF 50V +/-10% B	1	C971	
26-EBP102-KBX	CAP. CER 1000 PF 50V +/-10% B	1	C936	
26-EBP102-KBX	CAP. CER 1000 PF 50V +/-10% B	1	C937	
26-EBP103-ZFX	CAP. CER 0.01UF 50V +80/-20% F	1	C075	
26-EBP103-ZFX	CAP. CER 0.01UF 50V +80/-20% F	1	C083	
26-EBP103-ZFX	CAP. CER 0.01UF 50V +80/-20% F	1	C111	
26-EBP103-ZFX	CAP. CER 0.01UF 50V +80/-20% F	1	C121	
26-EBP103-ZFX	CAP. CER 0.01UF 50V +80/-20% F	1	C125	
26-EBP103-ZFX	CAP. CER 0.01UF 50V +80/-20% F	1	C126	
26-EBP103-ZFX	CAP. CER 0.01UF 50V +80/-20% F	1	C203	
26-EBP103-ZFX	CAP. CER 0.01UF 50V +80/-20% F	1	C205	
26-EBP103-ZFX	CAP. CER 0.01UF 50V +80/-20% F	1	C215	
26-EBP103-ZFX	CAP. CER 0.01UF 50V +80/-20% F	1	C226	

Part no	Desc	qty	loc
26-EBP103-ZFX	CAP. CER 0.01UF 50V +80/-20% F	1	C229
26-EBP103-ZFX	CAP. CER 0.01UF 50V +80/-20% F	1	C256
26-EBP103-ZFX	CAP. CER 0.01UF 50V +80/-20% F	1	C273
26-EBP103-ZFX	CAP. CER 0.01UF 50V +80/-20% F	1	C275
26-EBP103-ZFX	CAP. CER 0.01UF 50V +80/-20% F	1	C732
26-EBP103-ZFX	CAP. CER 0.01UF 50V +80/-20% F	1	C935
26-EBP103-ZFX	CAP. CER 0.01UF 50V +80/-20% F	1	C961
26-EBP103-ZFX	CAP. CER 0.01UF 50V +80/-20% F	1	C962
26-EBP104-ZFX	CAP. CER 0.1UF 50V +80%/-20%	1	C107
26-EBP104-ZFX	CAP. CER 0.1UF 50V +80%/-20%	1	C114
26-EBP104-ZFX	CAP. CER 0.1UF 50V +80%/-20%	1	C204
26-EBP104-ZFX	CAP. CER 0.1UF 50V +80%/-20%	1	C609
26-EBP104-ZFX	CAP. CER 0.1UF 50V +80%/-20%	1	C635
26-EBP104-ZFX	CAP. CER 0.1UF 50V +80%/-20%	1	C745
26-EBP104-ZFX	CAP. CER 0.1UF 50V +80%/-20%	1	C945
26-EBP120-JCX	CAP. CER 12PF 50V +/-5% CH	1	C209
26-EBP150-JCX	CAP. CER 15PF 50V +/-5% CH	1	C041
26-EBP150-JCX	CAP. CER 15PF 50V +/-5% CH	1	C042
26-EBP150-JCX	CAP. CER 15PF 50V +/-5% CH	1	C043
26-EBP150-JCX	CAP. CER 15PF 50V +/-5% CH	1	C044
26-EBP220-JCX	CAP. CER 22PF 50V +/-5% CH	1	C053
26-EBP220-JCX	CAP. CER 22PF 50V +/-5% CH	1	C054
26-EBP221-JCX	CAP. CER 220PF 50V +/-5% CH	1	C011
26-EBP221-JCX	CAP. CER 220PF 50V +/-5% CH	1	C021
26-EBP221-JCX	CAP. CER 220PF 50V +/-5% CH	1	C092
26-EBP221-JCX	CAP. CER 220PF 50V +/-5% CH	1	C112
26-EBP221-JCX	CAP. CER 220PF 50V +/-5% CH	1	C228A
26-EBP222-KBX	CAP. CER 2200PF 50V +/-10% B	1	C452
26-EBP300-JZX	CAP. CER 30PF 50V +/-5% SL	1	C055
26-EBP300-JZX	CAP. CER 30PF 50V +/-5% SL	1	C056
26-EBP330-JZX	CAP. CER 33PF 50V +/-5% SL TU	1	C128
26-EBP330-JZX	CAP. CER 33PF 50V +/-5% SL TU	1	C953
26-EBP331-JCX	CAP. CER 330PF 50V +/-5% CH	1	C004
26-EBP331-JCX	CAP. CER 330PF 50V +/-5% CH	1	C063
26-EBP331-JCX	CAP. CER 330PF 50V +/-5% CH	1	C084
26-EBP331-JCX	CAP. CER 330PF 50V +/-5% CH	1	C085
26-EBP331-JCX	CAP. CER 330PF 50V +/-5% CH	1	C091
26-EBP331-JCX	CAP. CER 330PF 50V +/-5% CH	1	C301
26-EBP390-JCX	CAP. CER 39PF 50V +/-5% CH	1	C051
26-EBP470-JZX	CAP. CER 47PF 50V +/-5% SL	1	C072
26-EBP470-JZX	CAP. CER 47PF 50V +/-5% SL	1	C073
26-EBP470-JZX	CAP. CER 47PF 50V +/-5% SL	1	C261
26-EBP470-JZX	CAP. CER 47PF 50V +/-5% SL	1	T141
27-ALQ272-JOX	CAP. M. PP 0.0027UF 1.6KV +/-5%	1	C413
27-ALQ432-JOX	CAP. M. PP 4300 PF 1.6KV +/-5%	1	C414
27-ALR822-JOX	CAP. M. PP 8200 PF 1.6KV +/-5%	1	C415
27-MBC104-JOX	CAP. M. P. E 0.1 UF 63V +/-5%	1	C102
27-MBC104-JOX	CAP. M. P. E 0.1 UF 63V +/-5%	1	C211
27-MBC104-JOX	CAP. M. P. E 0.1 UF 63V +/-5%	1	C212
27-MBC104-JOX	CAP. M. P. E 0.1 UF 63V +/-5%	1	C213
27-MBC104-JOX	CAP. M. P. E 0.1 UF 63V +/-5%	1	C242
27-MBC104-JOX	CAP. M. P. E 0.1 UF 63V +/-5%	1	C252
27-MBC224-JOX	CAP. M. P. E 0.22UF 63V +/-5%	1	C113
27-MBC224-JOX	CAP. M. P. E 0.22UF 63V +/-5%	1	C307
27-MBC474-JOX	CAP. M. P. E 0.47UF 63V +/-5%	1	C225
27-MBC474-JOX	CAP. M. P. E 0.47UF 63V +/-5%	1	C243
27-MBC474-JOX	CAP. M. P. E 0.47UF 63V +/-5%	1	C603

Part no	Desc	qty	loc
27-MBC474-J0X	CAP. M. P. E 0. 47UF 63V +/-5%	1	C604
27-MCC562-J0X	CAP. M. P. E 5600PF 100V +/-5%	1	C471
27-PBC103-J0X	CAP. P. E. 0. 01UF 63V +/-5%	1	C052
27-PBC222-J0X	CAP. P. E 0. 0022UF 63V +/-5%	1	C207
27-PBC222-J0X	CAP. P. E 0. 0022UF 63V +/-5%	1	C221
27-PBC223-J0X	CAP. P. E 0. 022 UF 63V +/-5%	1	C611
27-PBC223-J0X	CAP. P. E 0. 022 UF 63V +/-5%	1	C612
27-PBC333-J0X	CAP. P. E 0. 033UF 63V +/-5%	1	C302
27-PBC393-J0X	CAP. P. E 0. 039UF 63V +/-5%	1	C308
27-PBC472-J0X	CAP. P. E 0. 0047UF 63V +/-5%	1	C244
27-PBC563-J0X	CAP. P. E 0. 056 UF 63V +/-5%	1	C304
27-RHQ223-J0X	CAP. PP 0. 022 UF 400V +/-5%	1	C416
27-RHQ563-J0X	CAP. PP 0. 056 UF 400V +/-5%	1	C451
34-A608K6-1BX	COIL CHOKE 0. 6 UH +/-10%	1	L412
34-R100J2-OEX	COIL PL - 10 UH +/-5%	1	L252
34-R101J2-OEX	COIL PL - 100 UH +/-5%	1	L201
34-R101J2-OEX	COIL PL - 100 UH +/-5%	1	L211
34-R101J2-OEX	COIL PL - 100 UH +/-5%	1	L271
34-R120J2-OEX	COIL PL - 12 UH +/-5%	1	L256
34-R220J2-OEX	COIL PL - 22 UH +/-5%	1	L051
34-R220J2-OEX	COIL PL - 22 UH +/-5%	1	L081
34-R220J2-OEX	COIL PL - 22 UH +/-5%	1	L251
34-R229J2-OEX	COIL PL - 2. 2 UH +/-5%	1	L053
36-HDR001-XX1	TRANSFOR HOR. DRIVE (MAGNETIC CORE)	1	T401
36-LIN240-XX1	COIL LINEARITY 24 UH	1	L413
36-WID601-XX1	COIL CHOKE 600 UH	1	L414
37-SC2901-58BOX	FLYBACK BSC29-0158B	1	T461
38-236560-00X	COIL I. F. T. 236560 FOR VCO	1	T271
40-2916MT-MAH	P. C. B. MAIN BD	1	
41-BF0100-3BB	WIRE UL 1007 #24 100MM ORG	1	FOR P1 - P1
41-WJ0050-B00	WIRE BARE JUMPER 5MM	1	FOR Q241 (B - E)
41-WJ0050-B00	WIRE BARE JUMPER 5MM	1	C262
41-WJ0050-B00	WIRE BARE JUMPER 5MM	1	C946
41-WJ0050-B00	WIRE BARE JUMPER 5MM	1	J022
41-WJ0050-B00	WIRE BARE JUMPER 5MM	1	J410A
41-WJ0050-B00	WIRE BARE JUMPER 5MM	1	J415
41-WJ0050-B00	WIRE BARE JUMPER 5MM	1	J416
41-WJ0050-B00	WIRE BARE JUMPER 5MM	1	J417
41-WJ0050-B00	WIRE BARE JUMPER 5MM	1	J418
41-WJ0050-B00	WIRE BARE JUMPER 5MM	1	J419
41-WJ0050-B00	WIRE BARE JUMPER 5MM	1	J420
41-WJ0050-B00	WIRE BARE JUMPER 5MM	1	J435
41-WJ0050-B00	WIRE BARE JUMPER 5MM	1	J436
41-WJ0050-B00	WIRE BARE JUMPER 5MM	1	J437
41-WJ0050-B00	WIRE BARE JUMPER 5MM	1	J636
41-WJ0050-B00	WIRE BARE JUMPER 5MM	1	J637
41-WJ0050-B00	WIRE BARE JUMPER 5MM	1	J773
41-WJ0050-B00	WIRE BARE JUMPER 5MM	1	J871
41-WJ0050-B00	WIRE BARE JUMPER 5MM	1	J954
41-WJ0050-B00	WIRE BARE JUMPER 5MM	1	J955
41-WJ0050-B00	WIRE BARE JUMPER 5MM	1	C661
41-WJ0050-B00	WIRE BARE JUMPER 5MM	1	C662
41-WJ0060-B00	WIRE BARE JUMPER 6mm	1	J022A
41-WJ0060-B00	WIRE BARE JUMPER 6mm	1	J044
41-WJ0060-B00	WIRE BARE JUMPER 6mm	1	J123
41-WJ0060-B00	WIRE BARE JUMPER 6mm	1	J132
41-WJ0060-B00	WIRE BARE JUMPER 6mm	1	J141

Part no	Desc	qty	loc
41-WJ0060-B00	WIRE BARE JUMPER 6mm	1	J229
41-WJ0060-B00	WIRE BARE JUMPER 6mm	1	J230
41-WJ0060-B00	WIRE BARE JUMPER 6mm	1	J232
41-WJ0060-B00	WIRE BARE JUMPER 6mm	1	J242
41-WJ0060-B00	WIRE BARE JUMPER 6mm	1	J261
41-WJ0060-B00	WIRE BARE JUMPER 6mm	1	J301
41-WJ0060-B00	WIRE BARE JUMPER 6mm	1	J338
41-WJ0060-B00	WIRE BARE JUMPER 6mm	1	J401
41-WJ0060-B00	WIRE BARE JUMPER 6mm	1	J421
41-WJ0060-B00	WIRE BARE JUMPER 6mm	1	J512
41-WJ0060-B00	WIRE BARE JUMPER 6mm	1	J523
41-WJ0060-B00	WIRE BARE JUMPER 6mm	1	J543
41-WJ0060-B00	WIRE BARE JUMPER 6mm	1	J601
41-WJ0060-B00	WIRE BARE JUMPER 6mm	1	J633
41-WJ0060-B00	WIRE BARE JUMPER 6mm	1	J732
41-WJ0060-B00	WIRE BARE JUMPER 6mm	1	J733
41-WJ0060-B00	WIRE BARE JUMPER 6mm	1	J825
41-WJ0060-B00	WIRE BARE JUMPER 6mm	1	J826
41-WJ0060-B00	WIRE BARE JUMPER 6mm	1	J832
41-WJ0060-B00	WIRE BARE JUMPER 6mm	1	J834
41-WJ0060-B00	WIRE BARE JUMPER 6mm	1	J836
41-WJ0060-B00	WIRE BARE JUMPER 6mm	1	J837
41-WJ0060-B00	WIRE BARE JUMPER 6mm	1	J838
41-WJ0060-B00	WIRE BARE JUMPER 6mm	1	J911
41-WJ0060-B00	WIRE BARE JUMPER 6mm	1	J921
41-WJ0060-B00	WIRE BARE JUMPER 6mm	1	R023
41-WJ0060-B00	WIRE BARE JUMPER 6mm	1	R024
41-WJ0060-B00	WIRE BARE JUMPER 6mm	1	R025
41-WJ0060-B00	WIRE BARE JUMPER 6mm	1	R026
41-WJ0060-B00	WIRE BARE JUMPER 6mm	1	R027
41-WJ0060-B00	WIRE BARE JUMPER 6mm	1	R028A
41-WJ0060-B00	WIRE BARE JUMPER 6mm	1	R028B
41-WJ0060-B00	WIRE BARE JUMPER 6mm	1	R028C
41-WJ0060-B00	WIRE BARE JUMPER 6mm	1	R126
41-WJ0060-B00	WIRE BARE JUMPER 6mm	1	R224
41-WJ0060-B00	WIRE BARE JUMPER 6mm	1	R241
41-WJ0065-B00	WIRE BARE JUMPER 6.5MM	1	J511
41-WJ0065-B00	WIRE BARE JUMPER 6.5MM	1	J514
41-WJ0065-B00	WIRE BARE JUMPER 6.5MM	1	J615
41-WJ0065-B00	WIRE BARE JUMPER 6.5MM	1	J632
41-WJ0065-B00	WIRE BARE JUMPER 6.5MM	1	J725
41-WJ0065-B00	WIRE BARE JUMPER 6.5MM	1	J729
41-WJ0065-B00	WIRE BARE JUMPER 6.5MM	1	J410
41-WJ0065-B00	WIRE BARE JUMPER 6.5MM	1	R238
41-WJ0070-B00	WIRE BARE JUMPER 7MM	1	J023
41-WJ0070-B00	WIRE BARE JUMPER 7MM	1	J426
41-WJ0070-B00	WIRE BARE JUMPER 7MM	1	J513
41-WJ0070-B00	WIRE BARE JUMPER 7MM	1	J671
41-WJ0070-B00	WIRE BARE JUMPER 7MM	1	J672
41-WJ0070-B00	WIRE BARE JUMPER 7MM	1	J726
41-WJ0070-B00	WIRE BARE JUMPER 7MM	1	J741
41-WJ0070-B00	WIRE BARE JUMPER 7MM	1	J233A
41-WJ0075-B00	WIRE BARE JUMPER 7.5MM	1	D046
41-WJ0075-B00	WIRE BARE JUMPER 7.5MM	1	D141
41-WJ0075-B00	WIRE BARE JUMPER 7.5MM	1	J041
41-WJ0075-B00	WIRE BARE JUMPER 7.5MM	1	J043
41-WJ0075-B00	WIRE BARE JUMPER 7.5MM	1	J124

Part no	Desc	qty	loc
41-WJ0075-B00	WIRE BARE JUMPER 7.5MM	1	J151
41-WJ0075-B00	WIRE BARE JUMPER 7.5MM	1	J152
41-WJ0075-B00	WIRE BARE JUMPER 7.5MM	1	J154
41-WJ0075-B00	WIRE BARE JUMPER 7.5MM	1	J207
41-WJ0075-B00	WIRE BARE JUMPER 7.5MM	1	J208
41-WJ0075-B00	WIRE BARE JUMPER 7.5MM	1	J217
41-WJ0075-B00	WIRE BARE JUMPER 7.5MM	1	J241
41-WJ0075-B00	WIRE BARE JUMPER 7.5MM	1	J331
41-WJ0075-B00	WIRE BARE JUMPER 7.5MM	1	J351
41-WJ0075-B00	WIRE BARE JUMPER 7.5MM	1	J405
41-WJ0075-B00	WIRE BARE JUMPER 7.5MM	1	J406
41-WJ0075-B00	WIRE BARE JUMPER 7.5MM	1	J407
41-WJ0075-B00	WIRE BARE JUMPER 7.5MM	1	J408
41-WJ0075-B00	WIRE BARE JUMPER 7.5MM	1	J412
41-WJ0075-B00	WIRE BARE JUMPER 7.5MM	1	J414
41-WJ0075-B00	WIRE BARE JUMPER 7.5MM	1	J541
41-WJ0075-B00	WIRE BARE JUMPER 7.5MM	1	J551
41-WJ0075-B00	WIRE BARE JUMPER 7.5MM	1	J642
41-WJ0075-B00	WIRE BARE JUMPER 7.5MM	1	J651
41-WJ0075-B00	WIRE BARE JUMPER 7.5MM	1	J656
41-WJ0075-B00	WIRE BARE JUMPER 7.5MM	1	J693
41-WJ0075-B00	WIRE BARE JUMPER 7.5MM	1	J712
41-WJ0075-B00	WIRE BARE JUMPER 7.5MM	1	J734
41-WJ0075-B00	WIRE BARE JUMPER 7.5MM	1	J812
41-WJ0075-B00	WIRE BARE JUMPER 7.5MM	1	J821
41-WJ0075-B00	WIRE BARE JUMPER 7.5MM	1	J833
41-WJ0075-B00	WIRE BARE JUMPER 7.5MM	1	J851
41-WJ0075-B00	WIRE BARE JUMPER 7.5MM	1	J915
41-WJ0075-B00	WIRE BARE JUMPER 7.5MM	1	J941
41-WJ0075-B00	WIRE BARE JUMPER 7.5MM	1	J544
41-WJ0080-B00	WIRE BARE JUMPER 8 MM	1	J425
41-WJ0080-B00	WIRE BARE JUMPER 8 MM	1	J443
41-WJ0080-B00	WIRE BARE JUMPER 8 MM	1	J453
41-WJ0080-B00	WIRE BARE JUMPER 8 MM	1	J201
41-WJ0085-B00	WIRE BARE JUMPER 8.5MM	1	J122
41-WJ0085-B00	WIRE BARE JUMPER 8.5MM	1	J204
41-WJ0085-B00	WIRE BARE JUMPER 8.5MM	1	J205
41-WJ0085-B00	WIRE BARE JUMPER 8.5MM	1	J409
41-WJ0085-B00	WIRE BARE JUMPER 8.5MM	1	J424
41-WJ0085-B00	WIRE BARE JUMPER 8.5MM	1	J441
41-WJ0085-B00	WIRE BARE JUMPER 8.5MM	1	J502
41-WJ0085-B00	WIRE BARE JUMPER 8.5MM	1	J503
41-WJ0085-B00	WIRE BARE JUMPER 8.5MM	1	J553
41-WJ0085-B00	WIRE BARE JUMPER 8.5MM	1	J554
41-WJ0085-B00	WIRE BARE JUMPER 8.5MM	1	J621
41-WJ0085-B00	WIRE BARE JUMPER 8.5MM	1	J723
41-WJ0085-B00	WIRE BARE JUMPER 8.5MM	1	J822
41-WJ0085-B00	WIRE BARE JUMPER 8.5MM	1	J348
41-WJ0090-B00	WIRE BARE JUMPER 9MM	1	J031
41-WJ0090-B00	WIRE BARE JUMPER 9MM	1	J634
41-WJ0095-B00	WIRE BARE JUMPER 9.5MM	1	J226
41-WJ0095-B00	WIRE BARE JUMPER 9.5MM	1	J343
41-WJ0095-B00	WIRE BARE JUMPER 9.5MM	1	J344
41-WJ0095-B00	WIRE BARE JUMPER 9.5MM	1	J713
41-WJ0100-B00	WIRE BARE JUMPER 10MM	1	J001
41-WJ0100-B00	WIRE BARE JUMPER 10MM	1	J002
41-WJ0100-B00	WIRE BARE JUMPER 10MM	1	J061

Part no	Desc	qty	loc
41-WJ0100-B00	WIRE BARE JUMPER 10MM	1	J134
41-WJ0100-B00	WIRE BARE JUMPER 10MM	1	J203
41-WJ0100-B00	WIRE BARE JUMPER 10MM	1	J402
41-WJ0100-B00	WIRE BARE JUMPER 10MM	1	J423
41-WJ0100-B00	WIRE BARE JUMPER 10MM	1	J432
41-WJ0100-B00	WIRE BARE JUMPER 10MM	1	J501
41-WJ0100-B00	WIRE BARE JUMPER 10MM	1	J611
41-WJ0100-B00	WIRE BARE JUMPER 10MM	1	J631
41-WJ0100-B00	WIRE BARE JUMPER 10MM	1	J652
41-WJ0100-B00	WIRE BARE JUMPER 10MM	1	J653
41-WJ0100-B00	WIRE BARE JUMPER 10MM	1	J692
41-WJ0100-B00	WIRE BARE JUMPER 10MM	1	J728
41-WJ0100-B00	WIRE BARE JUMPER 10MM	1	J735
41-WJ0100-B00	WIRE BARE JUMPER 10MM	1	J916
41-WJ0100-B00	WIRE BARE JUMPER 10MM	1	J135
41-WJ0105-B00	WIRE BARE JUMPER 10.5MM	1	J442
41-WJ0105-B00	WIRE BARE JUMPER 10.5MM	1	J622
41-WJ0105-B00	WIRE BARE JUMPER 10.5MM	1	J333
41-WJ0105-B00	WIRE BARE JUMPER 10.5MM	1	J311
41-WJ0110-B00	WIRE BARE JUMPER 11MM	1	J227
41-WJ0110-B00	WIRE BARE JUMPER 11MM	1	J228
41-WJ0110-B00	WIRE BARE JUMPER 11MM	1	J244
41-WJ0110-B00	WIRE BARE JUMPER 11MM	1	J302
41-WJ0110-B00	WIRE BARE JUMPER 11MM	1	J313
41-WJ0110-B00	WIRE BARE JUMPER 11MM	1	J322
41-WJ0110-B00	WIRE BARE JUMPER 11MM	1	J612
41-WJ0110-B00	WIRE BARE JUMPER 11MM	1	J614
41-WJ0110-B00	WIRE BARE JUMPER 11MM	1	J625
41-WJ0110-B00	WIRE BARE JUMPER 11MM	1	JP213
41-WJ0110-B00	WIRE BARE JUMPER 11MM	1	J324
41-WJ0115-B00	WIRE BARE JUMPER 11.5MM	1	J052
41-WJ0115-B00	WIRE BARE JUMPER 11.5MM	1	J627
41-WJ0115-B00	WIRE BARE JUMPER 11.5MM	1	J628
41-WJ0115-B00	WIRE BARE JUMPER 11.5MM	1	J246
41-WJ0115-B00	WIRE BARE JUMPER 11.5MM	1	J522
41-WJ0115-B00	WIRE BARE JUMPER 11.5MM	1	J342
41-WJ0120-B00	WIRE BARE JUMPER 12MM	1	J051
41-WJ0120-B00	WIRE BARE JUMPER 12MM	1	J250
41-WJ0120-B00	WIRE BARE JUMPER 12MM	1	J253
41-WJ0120-B00	WIRE BARE JUMPER 12MM	1	J254
41-WJ0120-B00	WIRE BARE JUMPER 12MM	1	J434
41-WJ0120-B00	WIRE BARE JUMPER 12MM	1	J711
41-WJ0120-B00	WIRE BARE JUMPER 12MM	1	J644
41-WJ0125-B00	WIRE BARE JUMPER 12.5MM	1	J131
41-WJ0125-B00	WIRE BARE JUMPER 12.5MM	1	J206
41-WJ0125-B00	WIRE BARE JUMPER 12.5MM	1	J218
41-WJ0125-B00	WIRE BARE JUMPER 12.5MM	1	J222
41-WJ0125-B00	WIRE BARE JUMPER 12.5MM	1	J225
41-WJ0125-B00	WIRE BARE JUMPER 12.5MM	1	J233
41-WJ0125-B00	WIRE BARE JUMPER 12.5MM	1	J263
41-WJ0125-B00	WIRE BARE JUMPER 12.5MM	1	J352
41-WJ0125-B00	WIRE BARE JUMPER 12.5MM	1	J643
41-WJ0125-B00	WIRE BARE JUMPER 12.5MM	1	J813
41-WJ0125-B00	WIRE BARE JUMPER 12.5MM	1	J951
41-WJ0125-B00	WIRE BARE JUMPER 12.5MM	1	J981
41-WJ0125-B00	WIRE BARE JUMPER 12.5MM	1	J772
41-WJ0130-B00	WIRE BARE JUMPER 13MM	1	J239

Part no	Desc	qty	loc
41-WJ0130-B00	WIRE BARE JUMPER 13MM	1	J413
41-WJ0130-B00	WIRE BARE JUMPER 13MM	1	J346
41-WJ0135-B00	WIRE BARE JUMPER 13.5MM	1	J224
41-WJ0135-B00	WIRE BARE JUMPER 13.5MM	1	J236
41-WJ0135-B00	WIRE BARE JUMPER 13.5MM	1	J247
41-WJ0135-B00	WIRE BARE JUMPER 13.5MM	1	J248A
41-WJ0135-B00	WIRE BARE JUMPER 13.5MM	1	J411
41-WJ0135-B00	WIRE BARE JUMPER 13.5MM	1	R228A
41-WJ0135-B00	WIRE BARE JUMPER 13.5MM	1	J345
41-WJ0140-B00	WIRE BARE JUMPER 14MM	1	J335
41-WJ0140-B00	WIRE BARE JUMPER 14MM	1	J336
41-WJ0140-B00	WIRE BARE JUMPER 14MM	1	J337
41-WJ0140-B00	WIRE BARE JUMPER 14MM	1	J742
41-WJ0140-B00	WIRE BARE JUMPER 14MM	1	J321
41-WJ0150-B00	WIRE BARE JUMPER 15MM	1	J032
41-WJ0150-B00	WIRE BARE JUMPER 15MM	1	J133
41-WJ0150-B00	WIRE BARE JUMPER 15MM	1	J153
41-WJ0150-B00	WIRE BARE JUMPER 15MM	1	J235
41-WJ0150-B00	WIRE BARE JUMPER 15MM	1	J237
41-WJ0150-B00	WIRE BARE JUMPER 15MM	1	J243
41-WJ0150-B00	WIRE BARE JUMPER 15MM	1	J245
41-WJ0150-B00	WIRE BARE JUMPER 15MM	1	J255
41-WJ0150-B00	WIRE BARE JUMPER 15MM	1	J262
41-WJ0150-B00	WIRE BARE JUMPER 15MM	1	J347
41-WJ0150-B00	WIRE BARE JUMPER 15MM	1	J461
41-WJ0150-B00	WIRE BARE JUMPER 15MM	1	J542
41-WJ0150-B00	WIRE BARE JUMPER 15MM	1	J714
41-WJ0150-B00	WIRE BARE JUMPER 15MM	1	J761
41-WJ0150-B00	WIRE BARE JUMPER 15MM	1	J782
41-WJ0150-B00	WIRE BARE JUMPER 15MM	1	J931
41-WJ0160-B00	WIRE BARE JUMPER 16MM	1	J238
41-WJ0160-B00	WIRE BARE JUMPER 16MM	1	J325
41-WJ0160-B00	WIRE BARE JUMPER 16MM	1	J334
41-WJ0160-B00	WIRE BARE JUMPER 16MM	1	J431
41-WJ0160-B00	WIRE BARE JUMPER 16MM	1	J645
41-WJ0165-B00	WIRE BARE JUMPER 16.5MM	1	J221
41-WJ0165-B00	WIRE BARE JUMPER 16.5MM	1	J314
41-WJ0165-B00	WIRE BARE JUMPER 16.5MM	1	J234
41-WJ0170-B00	WIRE BARE JUMPER 17MM	1	J231
41-WJ0170-B00	WIRE BARE JUMPER 17MM	1	J240
41-WJ0170-B00	WIRE BARE JUMPER 17MM	1	J835
41-WJ0175-B00	WIRE BARE JUMPER 17.5MM	1	J223
41-WJ0175-B00	WIRE BARE JUMPER 17.5MM	1	J249A
41-WJ0175-B00	WIRE BARE JUMPER 17.5MM	1	J251
41-WJ0175-B00	WIRE BARE JUMPER 17.5MM	1	J661
41-WJ0175-B00	WIRE BARE JUMPER 17.5MM	1	J811
41-WJ0175-B00	WIRE BARE JUMPER 17.5MM	1	J912
41-WJ0175-B00	WIRE BARE JUMPER 17.5MM	1	J913
41-WJ0180-B00	WIRE BARE JUMPER 18MM	1	J214
41-WJ0180-B00	WIRE BARE JUMPER 18MM	1	J623
41-WJ0190-B00	WIRE BARE JUMPER 19MM	1	J823
41-WJ0195-B00	WIRE BARE JUMPER 19.5MM	1	J323
41-WJ0195-B00	WIRE BARE JUMPER 19.5MM	1	J355
41-WJ0195-B00	WIRE BARE JUMPER 19.5MM	1	J641
41-WJ0195-B00	WIRE BARE JUMPER 19.5MM	1	J731
41-WJ0200-B00	WIRE BARE JUMPER 20MM	1	J312
41-WJ0200-B00	WIRE BARE JUMPER 20MM	1	J332

Part no	Desc	qty	loc	
41-WJ0200-B00	WIRE BARE JUMPER 20MM	1	J427	
41-WJ0200-B00	WIRE BARE JUMPER 20MM	1	J624	
41-WJ0200-B00	WIRE BARE JUMPER 20MM	1	J626	
41-WJ0200-B00	WIRE BARE JUMPER 20MM	1	J727	
41-WJ0200-B00	WIRE BARE JUMPER 20MM	1	J824	
41-WJ0200-B00	WIRE BARE JUMPER 20MM	1	J831	
45-OSC4M4-3Y0	CRYSTAL 4.43MHZ (CL=16pF)	1	X201	
45-OSC8M0-0Y0	CRYSTAL 8.0MHZ	1	X051	
45-SAWK33-50K	SAW FILTER K3350K (38.9MHZ)	1	Z141	
45-TRA5M5-0Y0	CER TRAP TPS 5.5MHZ	1	Z254	
46-12866W-02X	PIN BASE *2 S11-02Y	1		P601 FOR FRONT CAB. (SPK)
46-20598W-04X	PIN BASE *4 TJC1-4A	1		P411 FOR DY CONNECT.
46-20600H-04X	HS 4P A/B 360/13 RBCW TJC1-4Y	1		FOR D.F BD (A1' & A2 & A5 & A6)
46-27306H-02X	HS 2P24 150/5 F/W TJC3-2Y	1		P1003 "2" TO Q932(B), "3" TO Q931(B)
46-33079W-02X	PIN BASE *2 TJC3-2A	1		P602 FOR FRONT CAB. (SPK)
46-33079W-03X	PIN BASE *3 TJC3-3A	1		P401 FOR VM BD P504
46-33079W-04X	PIN BASE *4 TJC3-4A	1		P202 FOR VM BD P505
46-33079W-04X	PIN BASE *4 TJC3-4A	1		P421 FOR CRT BD P502
46-33079W-05X	PIN BASE *5 TJC3-5A	1		P001 FOR F. CTL BD P001B
46-33079W-05X	PIN BASE *5 TJC3-5A	1		P201 FOR CRT BD P503
46-33079W-06X	PIN BASE *6 TJC3-6A	1		P002 FOR W.BAL. ADJUST
47-RCA023-XX1	RCA JACK 3PV YEL WHI RED/SW	1	P911	
47-RCA023-XX1	RCA JACK 3PV YEL WHI RED/SW	1	P931	
47-SVI002-XX0	Y/C SOCKET VERTICAL TYPE	1	P981	
54-128700-0X0	FIBRE WASHER 3.3 X 10 X 0.8	2		MTG M.BD & FBT
62-10654X-00F	UNI-TIE (2.5mmX95mm)	12		
62-227680-0UA	HOLDER CABLE FOR FBT (2)	1		
63-B30100-BT4	S/T SCREW B 3 X 10 BT	2		MTG M.BD & FBT
63-W30100-AB4	S/T SCREW W 3 X 10 AB	8		MTG M.BD & BKT
64-P30080-104	M/C SCREW P 3 X 8	1		FOR IC301
64-P30080-104	M/C SCREW P 3 X 8	1		FOR Q412
64-P30080-104	M/C SCREW P 3 X 8	1		FOR Q722
64-P30100-104	M/C SCREW P 3 X 10	2		FOR IC601
65-Z30050-23M	NUT M 3	2		FOR IC301 & Q412
65-Z30050-23M	NUT M 3	2		FOR IC601
66-343730-0B0	HOLLOW RIVET 1.6X3.0XL3.2	5		FOR T461
66-343740-0B0	HOLLOW RIVET (2.3mmx4.0mmx3.5mm)	2		FOR R404
67-H27292-1A0	HEAT SINK-REGULATOR & DPC A=60	1		FOR Q722
67-H30147-1A0	HEAT SINK FOR HORIZ	1		FOR Q412
67-H30179-5A0	HEAT SINK	1		FOR IC301
67-H30705-3A0	HEAT SINK	1		FOR IC601
70-271510-00A	SERVICE CARD	1		FOR PRODUCTION USE
71-270870-0A9	LABEL	2		
90-209770-SR1	SILICONE GREASE G-746	0		FOR IC601 & Q412 & Q722
90-269080-ZU0	CLEAN COATING TC-131L 14KG/BARREL	0		
25-BCB100-M1X	CAP. ELEC 10 UF 16V +/-20%	1	C074	
25-BCB100-M1X	CAP. ELEC 10 UF 16V +/-20%	1	C106	
25-BCB100-M1X	CAP. ELEC 10 UF 16V +/-20%	1	C214	
25-BCB100-M1X	CAP. ELEC 10 UF 16V +/-20%	1	C227	
25-BCB100-M1X	CAP. ELEC 10 UF 16V +/-20%	1	C276	
25-BCB100-M1X	CAP. ELEC 10 UF 16V +/-20%	1	C651	
25-BCB100-M1X	CAP. ELEC 10 UF 16V +/-20%	1	C655	
25-BCB100-M1X	CAP. ELEC 10 UF 16V +/-20%	1	C952	
25-BCB100-M1X	CAP. ELEC 10 UF 16V +/-20%	1	C278	
25-BCB101-M1X	CAP. ELEC 100 UF 16V +/-20%	1	C064	
25-BCB101-M1X	CAP. ELEC 100 UF 16V +/-20%	1	C217	
25-BCB101-M1X	CAP. ELEC 100 UF 16V +/-20%	1	C228	

Part no	Desc	qty	loc
25-BCB101-M1X	CAP. ELEC 100 UF 16V +/-20%	1	C257
25-BCB101-M1X	CAP. ELEC 100 UF 16V +/-20%	1	C934
25-BCB101-M1X	CAP. ELEC 100 UF 16V +/-20%	1	C944
25-BCB101-M1X	CAP. ELEC 100 UF 16V +/-20%	1	C969
25-BCB221-M1X	CAP. ELEC 220 UF 16V +/-20%	1	C933
25-BCB221-M1X	CAP. ELEC 220 UF 16V +/-20%	1	C634
25-BCB470-M1X	CAP. ELEC 47 UF 16V +/-20%	1	C202
25-BCB470-M1X	CAP. ELEC 47 UF 16V +/-20%	1	C274
25-BCB470-M1X	CAP. ELEC 47 UF 16V +/-20%	1	C911
25-BCB470-M1X	CAP. ELEC 47 UF 16V +/-20%	1	C912
25-BCB470-M1X	CAP. ELEC 47 UF 16V +/-20%	1	C913
25-BCB470-M1X	CAP. ELEC 47 UF 16V +/-20%	1	C921
25-BCB470-M1X	CAP. ELEC 47 UF 16V +/-20%	1	C922
25-BCB470-M1X	CAP. ELEC 47 UF 16V +/-20%	1	C923
25-BCB470-M1X	CAP. ELEC 47 UF 16V +/-20%	1	C931
25-BCB470-M1X	CAP. ELEC 47 UF 16V +/-20%	1	C932
25-BCB470-M1X	CAP. ELEC 47 UF 16V +/-20%	1	C943
25-BCB470-M1X	CAP. ELEC 47 UF 16V +/-20%	1	C981
25-BCB470-M1X	CAP. ELEC 47 UF 16V +/-20%	1	C991
25-BCB471-M1X	CAP. ELEC 470 UF 16V +/-20%	1	C082
25-BEA102-M1X	CAP. ELEC 1000 UF 35V +/-20%	1	C432
25-BEA102-M1X	CAP. ELEC 1000 UF 35V +/-20%	1	C610
25-BEA221-M1X	CAP. ELEC 220 UF 35V +/-20%	1	C306
25-BEA471-M1X	CAP. ELEC 470 UF 35V +/-20%	1	C607
25-BEA471-M1X	CAP. ELEC 470 UF 35V +/-20%	1	C608
25-BEB101-M1X	CAP. ELEC 100 UF 35V +/-20%	1	C731
25-BEG222-M1X	CAP. ELEC 2200 UF 35V +/-20%	1	C303
25-BEG222-M1X	CAP. ELEC 2200 UF 35V +/-20%	1	C309
25-BFB100-M1X	CAP. ELEC 10 UF 50V +/-20%	1	C311
25-BFB100-M1X	CAP. ELEC 10 UF 50V +/-20%	1	C222
25-BFB101-M1X	CAP. ELEC 100 UF 50V +/-20%	1	C605
25-BFB108-M1X	CAP. ELEC 0.1 UF 50V +/-20%	1	C271
25-BFB109-M1X	CAP. ELEC 1 UF 50V +/-20%	1	C206
25-BFB109-M1X	CAP. ELEC 1 UF 50V +/-20%	1	C253
25-BFB109-M1X	CAP. ELEC 1 UF 50V +/-20%	1	C631
25-BFB478-M1X	CAP. ELEC 0.47 UF 50V +/-20%	1	C208
25-BFB479-M1X	CAP. ELEC 4.7 UF 50V +/-20%	1	C101
25-BFB479-M1X	CAP. ELEC 4.7 UF 50V +/-20%	1	C124
34-A109K0-1IX	COIL CHOKE 1 UH +/-10%	1	L121
34-A109K0-1IX	COIL CHOKE 1 UH +/-10%	1	L141
27-MBC474-J0X	CAP. M. P. E 0.47UF 63V +/-5%	1	C251
10-PC574J-DJX	DIODE ZENER UPC 574J	1	D111
27-AGR624-JSX	CAP. M. PP 0.62 UF 250V +/-5%	1	C418
62-B166MB-OUN	MAIN BD BRACEKT	1	
18-CB0822-JNX	RES. C. F. 8.2K OHM 1/6W +/-5%	1	R022

PART XI. Safety & EMC Components

In order to guarantee the safety & EMC of the product, ensure to replace the following components with ones that have the same type and specification.

Safety Component

No.	Name	Location No.
1	Isolating Resistor	R835
2	Isolating Capacitor	C835
4	Degaussing Coil	L803
5	Switch Transformer	T801 T802
6	Flyback Transformer	T461
7	CRT Base	S501
8	Fuse	F801
9	Power Switch	S801
10	Power Cord	P801
11	PCB	PCB

EMC Component

No.	Name	Location No.
1	Tuner	TU101
2	Oscillator	T271
3	Rectifier Diode	D831 D832 D833 834 804
4	Power Filter	T801
5	SAW Filter	Z141
6	Switch Transformer	T802
7	Ferrite	L801

